

ARKANSAS

2003

TRAFFIC CRASH STATISTICS



Prepared by:
Arkansas State Police
Highway Safety Office
1 State Police Plaza Drive
Little Rock, AR 72209
www.asp.arkansas.gov

TABLE OF CONTENTS

INTRODUCTION

2003 ARKANSAS CRASH SUMMARY.....	2
----------------------------------	---

FIVE AND TEN YEAR TRENDS

FATAL CRASHES AND RATES.....	3
FATALITIES AND RATES.....	4
FATALITIES BY AGE GROUP, 1998-2003.....	5
NONFATAL INJURIES, RATES AND INJURIES BY SEVERITY.....	6 - 7
TOTAL CRASHES AND RATES.....	8
ALCOHOL/DRUG RELATED FATALITIES VS. TOTAL FATALITIES.....	9
PERCENT ALCOHOL/DRUG RELATED FATALITIES ARKANSAS VS. NATIONAL.....	10
ALCOHOL/DRUG RELATED CRASHES VS. TOTAL CRASHES.....	11
ALCOHOL/DRUG RELATED FATAL CRASHES VS. TOTAL FATAL CRASHES.....	12
MOTORCYCLE CRASHES.....	13
RAILROAD CRASHES, FATALITIES AND INJURIES.....	14

CURRENT YEAR (2003)

FATALITIES BY SAFETY RESTRAINT USAGE	
PERCENT USED AND NOT USED.....	15
FATALITIES BY SAFETY RESTRAINT USAGE BY AGE GROUP.....	16
FATALITIES BY SAFETY RESTRAINT USAGE BY AGE.....	17
FATALITIES BY AGE AND PERSON TYPE.....	18
ALCOHOL/DRUG RELATED FATALITIES BY AGE AND PERSON TYPE.....	19
FATAL CRASHES AND FATALITIES BY MONTH.....	20
CRASHES BY TIME OF DAY AND DAY OF WEEK.....	21
ALCOHOL/DRUG RELATED CRASHES BY TIME OF DAY AND	
DAY OF WEEK.....	22
FATAL CRASHES BY TIME OF DAY AND DAY OF WEEK.....	23
ALCOHOL/DRUG RELATED FATAL CRASHES BY TIME OF DAY AND	
DAY OF WEEK.....	24
CRASHES BY LIGHTING CONDITIONS.....	25
CRASHES BY ROAD SURFACE CONDITIONS.....	26
CRASHES BY ROAD SYSTEM.....	27
CRASH RATES BY ROAD SYSTEM.....	28
CRASHES BY RURAL/URBAN LOCATION.....	29
CRASHES BY INVESTIGATING AGENCY.....	30
CRASHES BY TYPE OF COLLISION	31
VEHICLES INVOLVED BY FIRST HARMFUL EVENT	32
DRIVERS BY OPERATOR FACTOR	33
DRIVERS IN ALCOHOL/DRUG RELATED CRASHES BY OPERATOR FACTOR	34
PEDESTRIAN FATALITIES.....	35 - 36
ARKANSAS' 20 LARGEST CITIES BY POPULATION -	
CRASHES, FATALITIES AND INJURIES.....	37
ARKANSAS' 20 LARGEST CITIES BY POPULATION -	
ALCOHOL & OTHER DRUG RELATED CRASHES, FATALITIES AND INJURIES.....	38
COUNTY BREAKDOWNS	
TOTAL CRASHES, FATALITIES AND INJURIES BY COUNTY.....	39 - 40
ALCOHOL/DRUG RELATED	
CRASHES, FATALITIES AND INJURIES BY COUNTY.....	41 - 42
FATALITIES VS. ALCOHOL/DRUG RELATED FATALITIES BY COUNTY.....	43

2003 ARKANSAS CRASH SUMMARY

- **On all public roads in Arkansas during 2003 there were:**

70,914 total crashes reported, a 0.01 % increase from 2002

564 fatal crashes reported, a 1.2 % increase from 2002

641 fatalities reported, no increase or decrease from 2002

272 alcohol/drug related fatalities, a 11.9 % increase from 2002

29.8 billion vehicle miles traveled, a 2.1 % increase from 2002

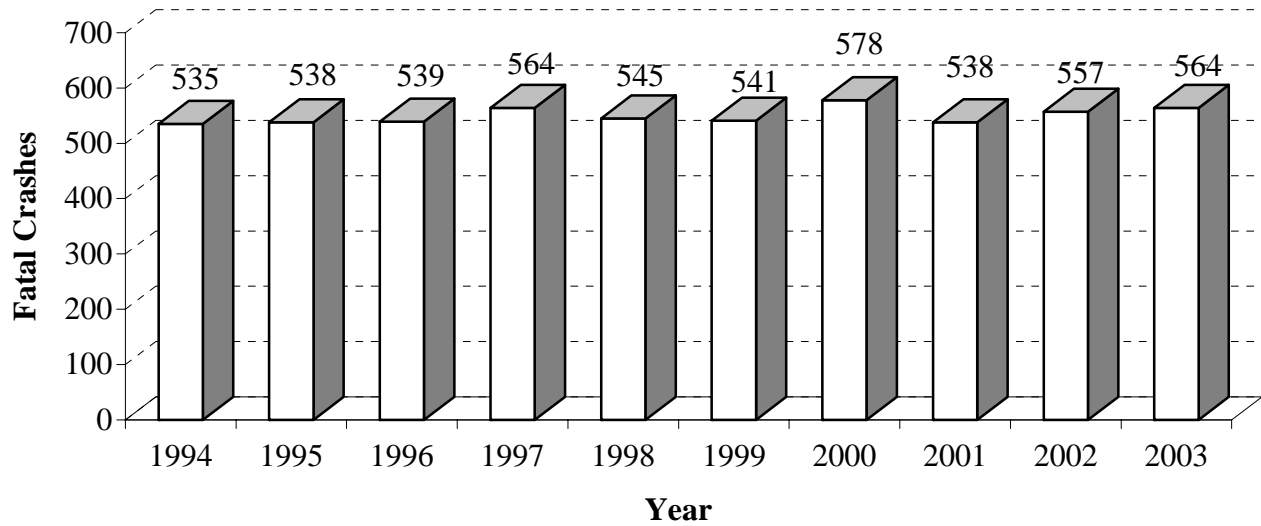
- **The fatality rate decreased from 2.2 in 2002 to 2.1 fatalities per 100 MVM* traveled.**
- **The fatal crash rate remained steady at 1.9 fatal crashes per 100 MVM* traveled.**

* Million vehicle miles

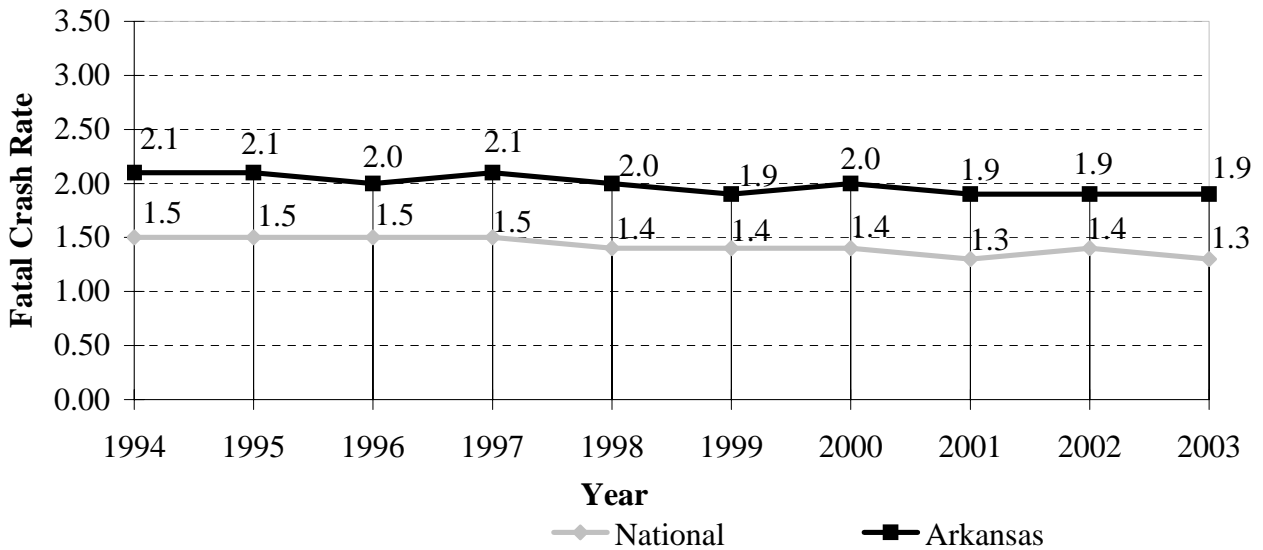
FATAL CRASHES AND RATES

10 YEAR TRENDS

STATEWIDE FATAL CRASHES



FATAL CRASH RATE (FATAL CRASHES PER 100 MVM*)

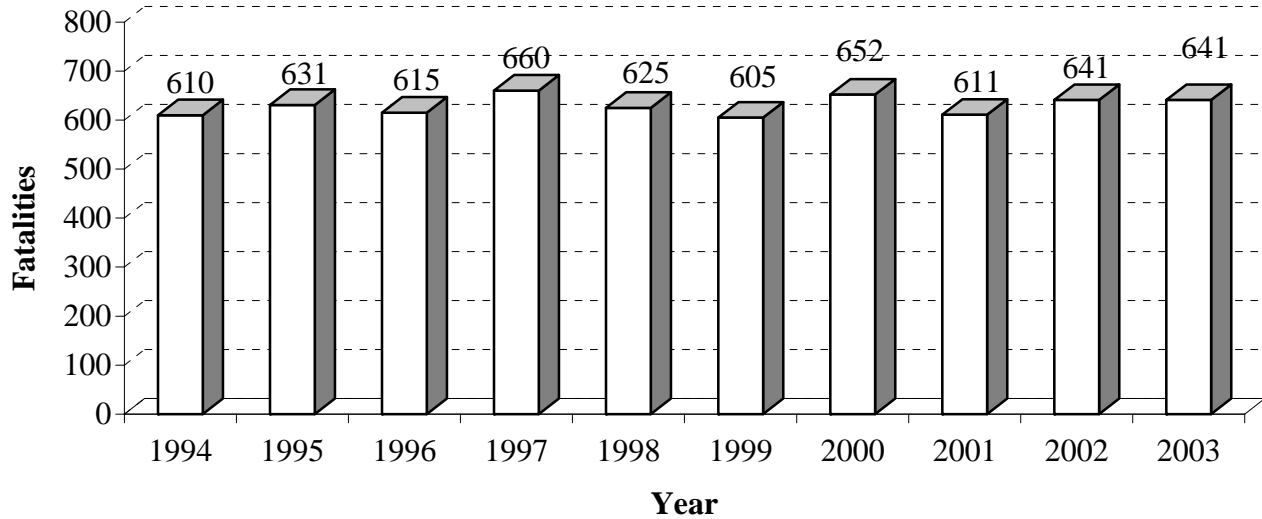


* Million vehicle miles

FATALITIES AND RATES

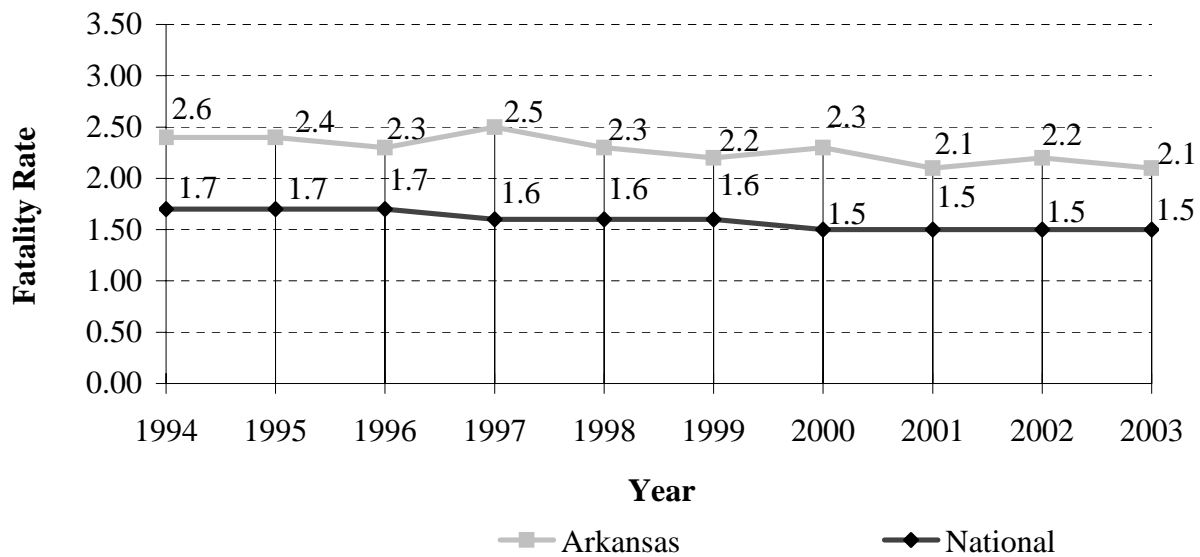
10 YEAR TRENDS

STATEWIDE FATALITIES



FATALITY RATE (FATALITIES PER 100 MVM*)

ARKANSAS FATALITY RATE (FATALITIES PER 100 MVM*)

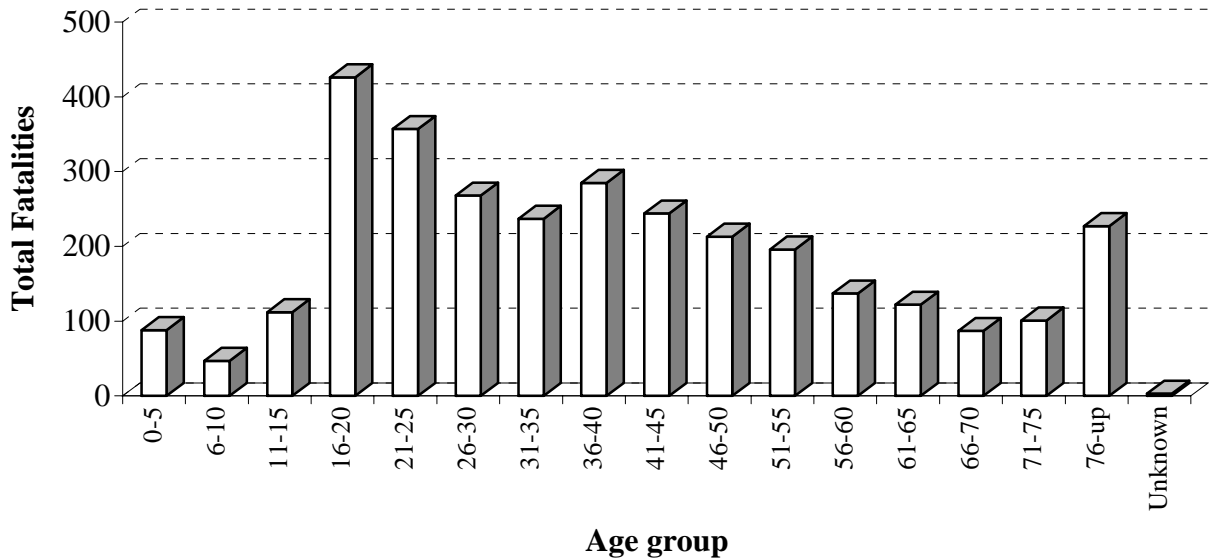


* Million vehicle miles

FATALITIES BY AGE GROUP, 1999-2003

5 YEAR TRENDS

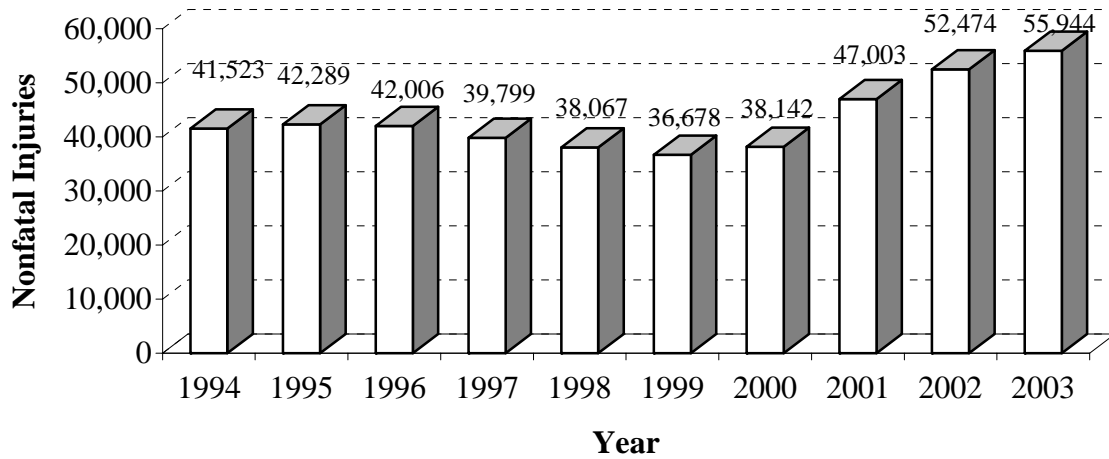
Age Group	1999	2000	2001	2002	2003	Total Fatalities
0-5	23	12	22	14	17	88
6-10	10	10	10	6	11	47
11-15	26	28	21	19	18	112
16-20	81	78	99	91	77	426
21-25	54	62	70	85	86	357
26-30	56	54	48	63	47	268
31-35	46	49	48	50	44	237
36-40	51	65	56	57	56	285
41-45	52	55	32	46	59	244
46-50	48	48	36	40	41	213
51-55	28	43	43	36	46	196
56-60	16	38	26	22	35	137
61-65	23	19	22	30	28	122
66-70	13	25	16	14	19	87
71-75	31	15	15	29	11	101
76-up	44	51	47	39	46	227
Unknown	3	0	0	0	0	3
Total	605	652	611	641	641	3,150



NONFATAL INJURIES AND RATES

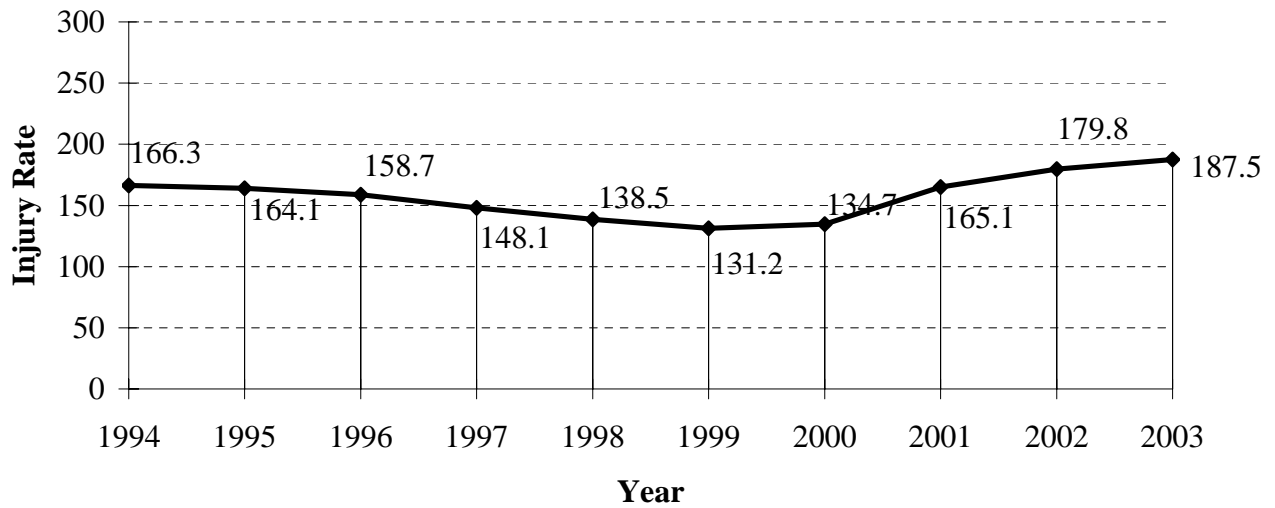
10 YEAR TRENDS

STATEWIDE NONFATAL INJURIES



Note: Increase in total number of nonfatal injuries in 2001 and 2002 is due to an increase in police reported possible injuries.

INJURY RATE (INJURIES PER 100 MVM*)



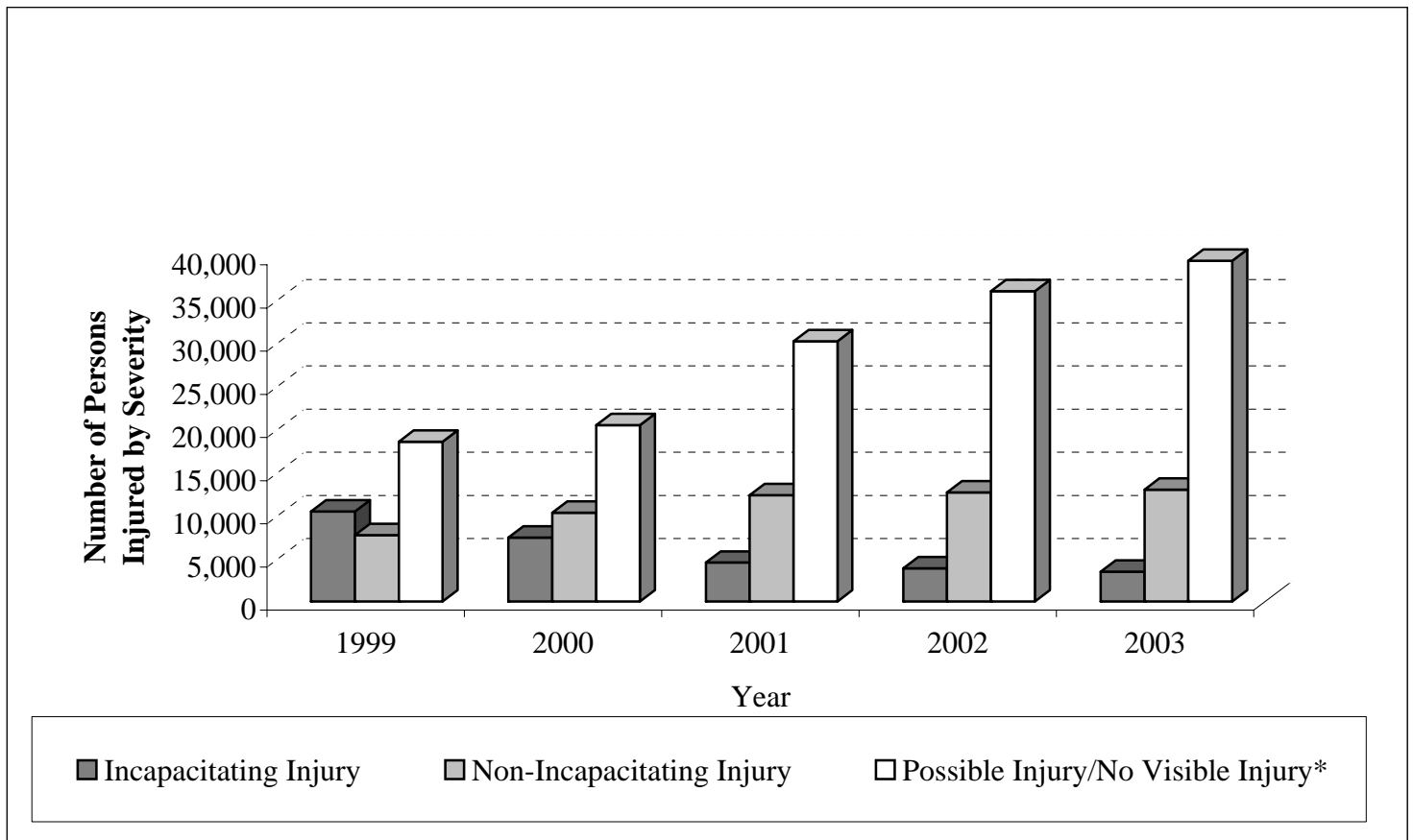
* Million vehicle miles

PERSONS INVOLVED IN CRASHES BY INJURY SEVERITY IN 2003

5 YEAR TREND

Injury Description	Number of Persons				
	1999	2000	2001	2002	2003
Fatal Injury	605	652	611	641	641
Incapacitating Injury	10,451	7,412	4,516	3,856	3,462
Non-Incapacitating Injury	7,711	10,297	12,320	12,648	12,977
Possible Injury/No Visible Injury*	18,516	20,433	30,166	35,966	39,505
No Injury/Property Damage Only	154,999	149,225	135,814	137,185	130,545

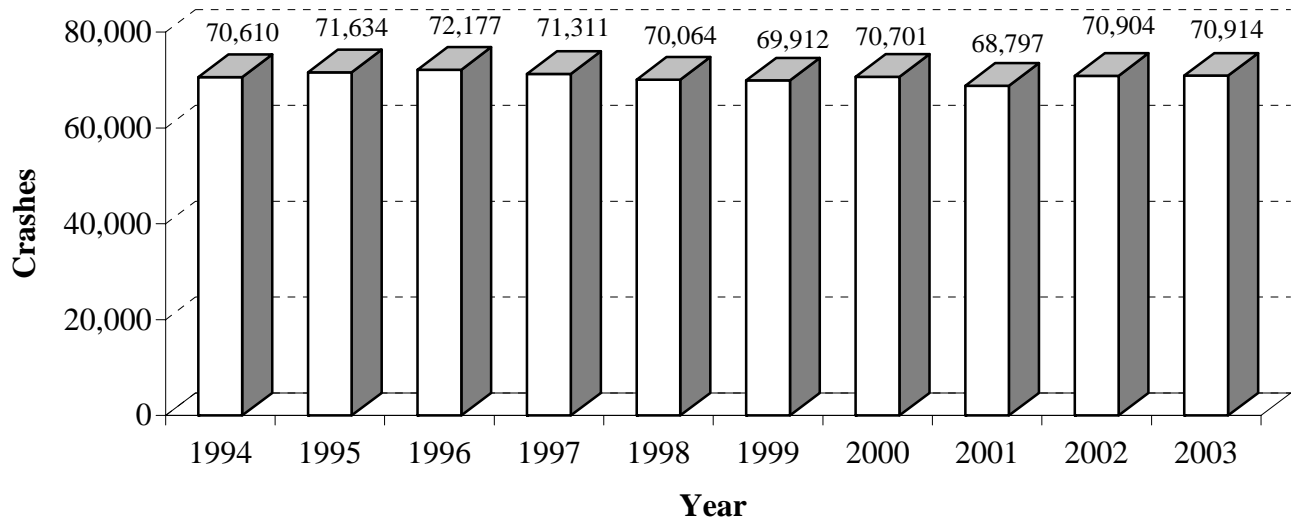
* Note: Terminology for Possible Injury was changed to No Visible Injury in May 2000.



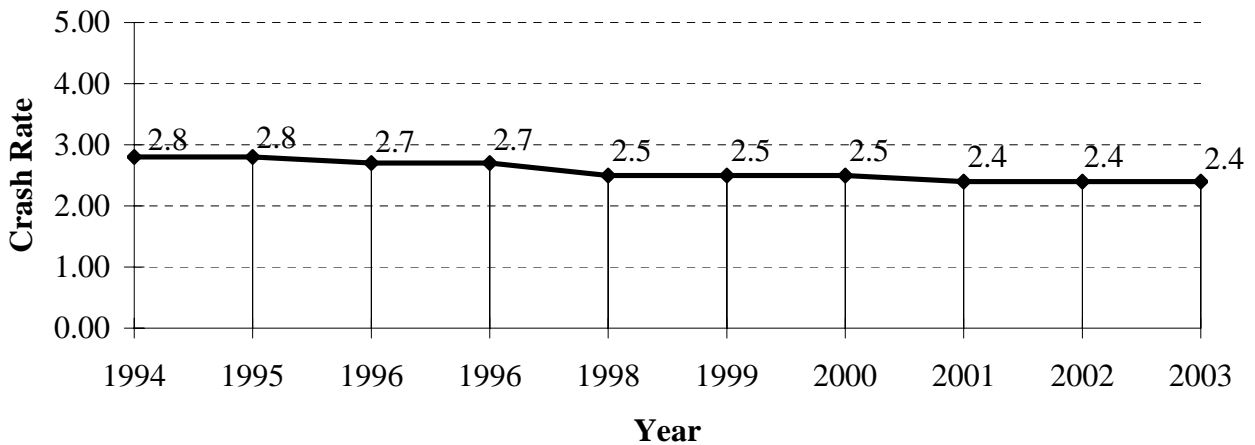
TOTAL CRASHES AND RATES

10 YEAR TRENDS

STATEWIDE CRASHES



CRASH RATE (CRASHES PER MVM*)

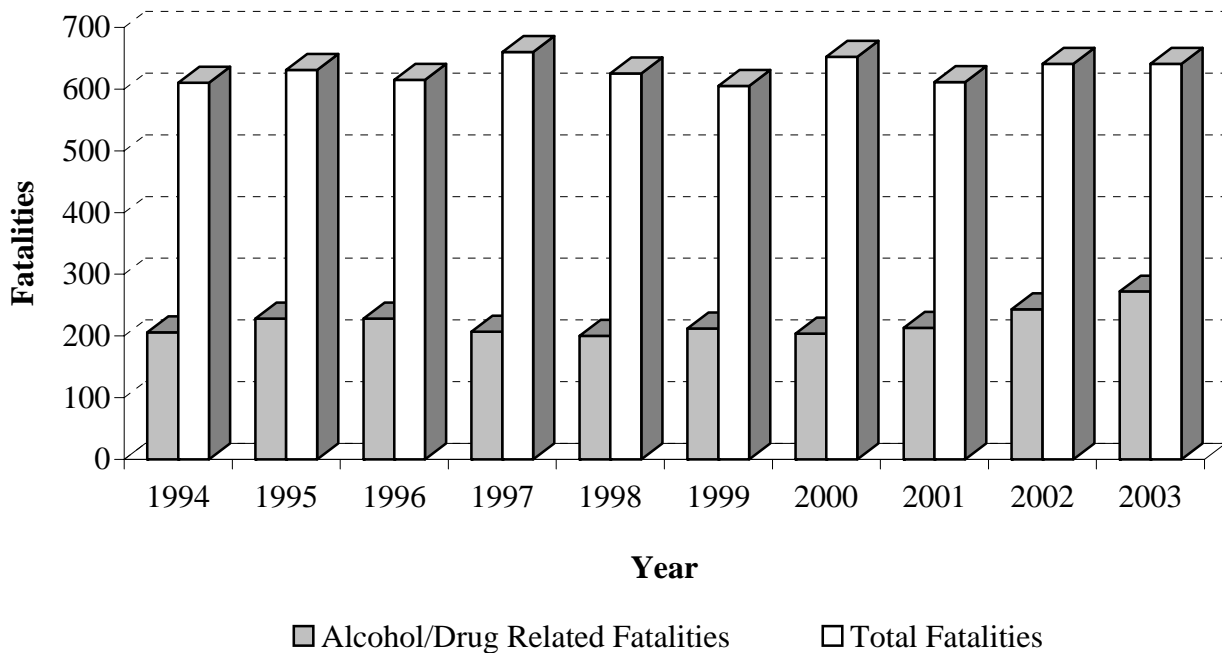


* Million vehicle miles

ALCOHOL/DRUG RELATED FATALITIES VS. TOTAL FATALITIES

10 YEAR TRENDS

Year	Alcohol/Drug Related Fatalities	Total Fatalities	Alcohol/Drug Fatalities as a % of Total
1994	206	610	34%
1995	228	631	36%
1996	228	615	37%
1997	207	660	31%
1998	200	625	32%
1999	212	605	35%
2000	204	652	31%
2001	213	611	35%
2002	243	641	38%
2003	272	641	42%

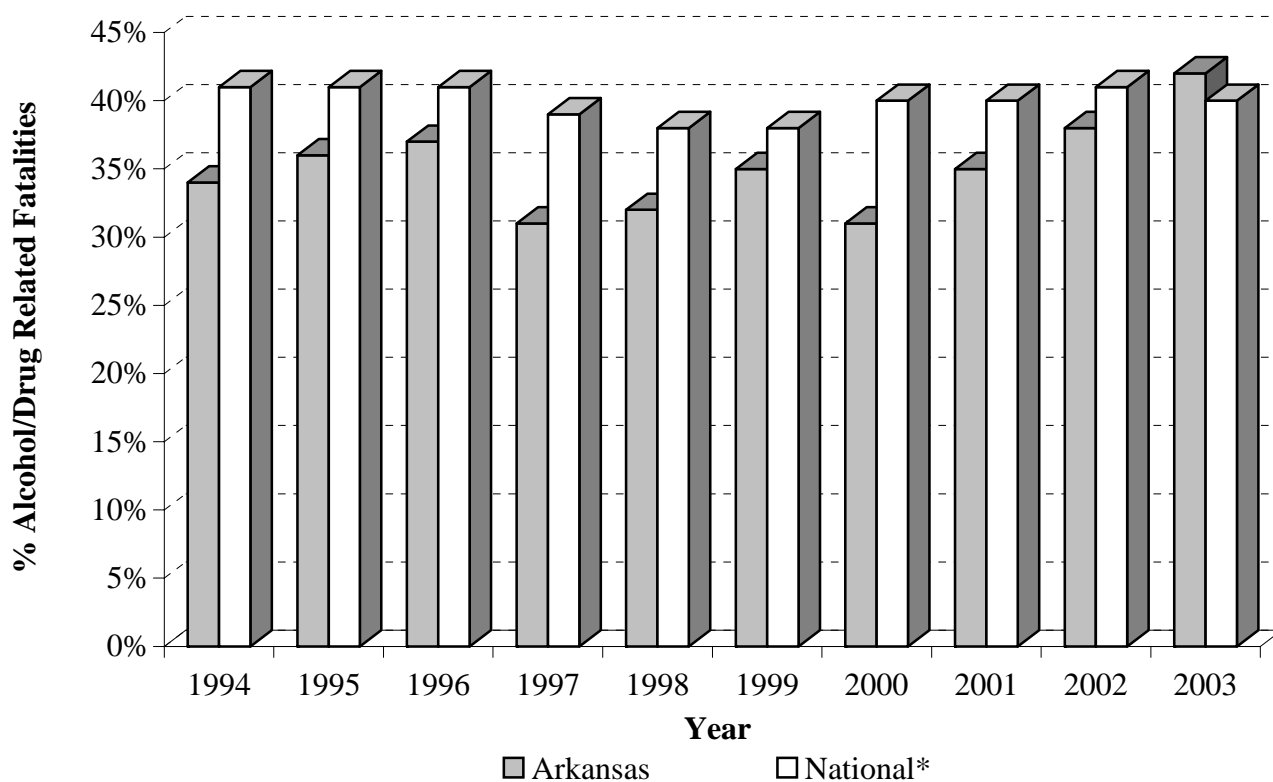


PERCENT ALCOHOL/DRUG RELATED FATALITIES ARKANSAS VS. NATIONAL

10 YEAR TRENDS

Year	Arkansas	National*
1994	34%	41%
1995	36%	41%
1996	37%	41%
1997	31%	39%
1998	32%	38%
1999	35%	38%
2000	31%	40%
2001	35%	40%
2002	38%	41%
2003	42%	40%

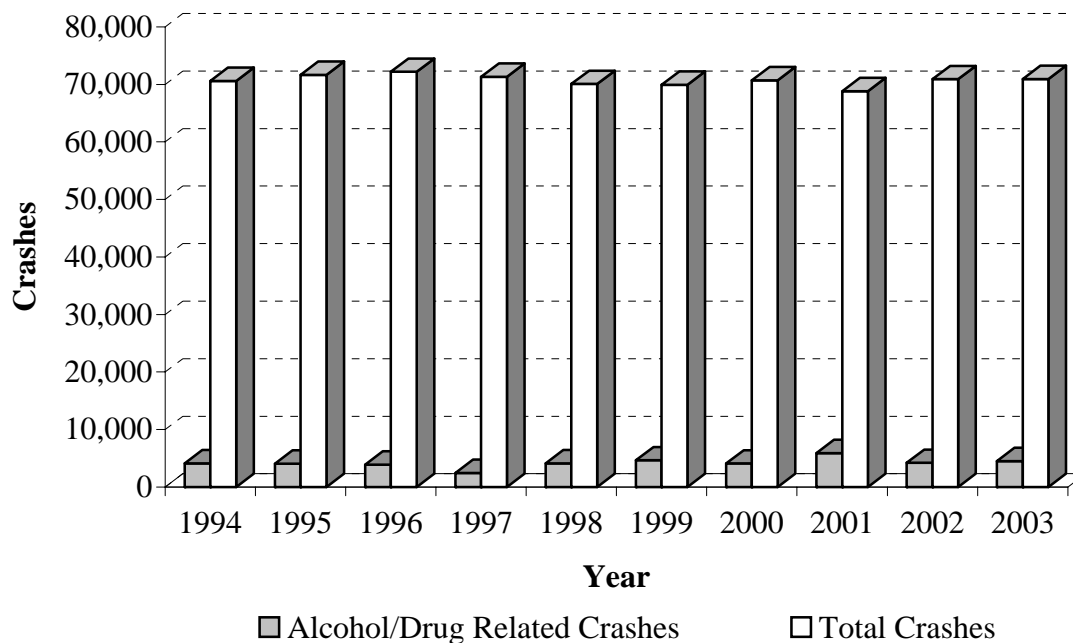
* Note: National figures represent alcohol related only.



ALCOHOL/DRUG RELATED CRASHES VS. TOTAL CRASHES

10 YEAR TRENDS

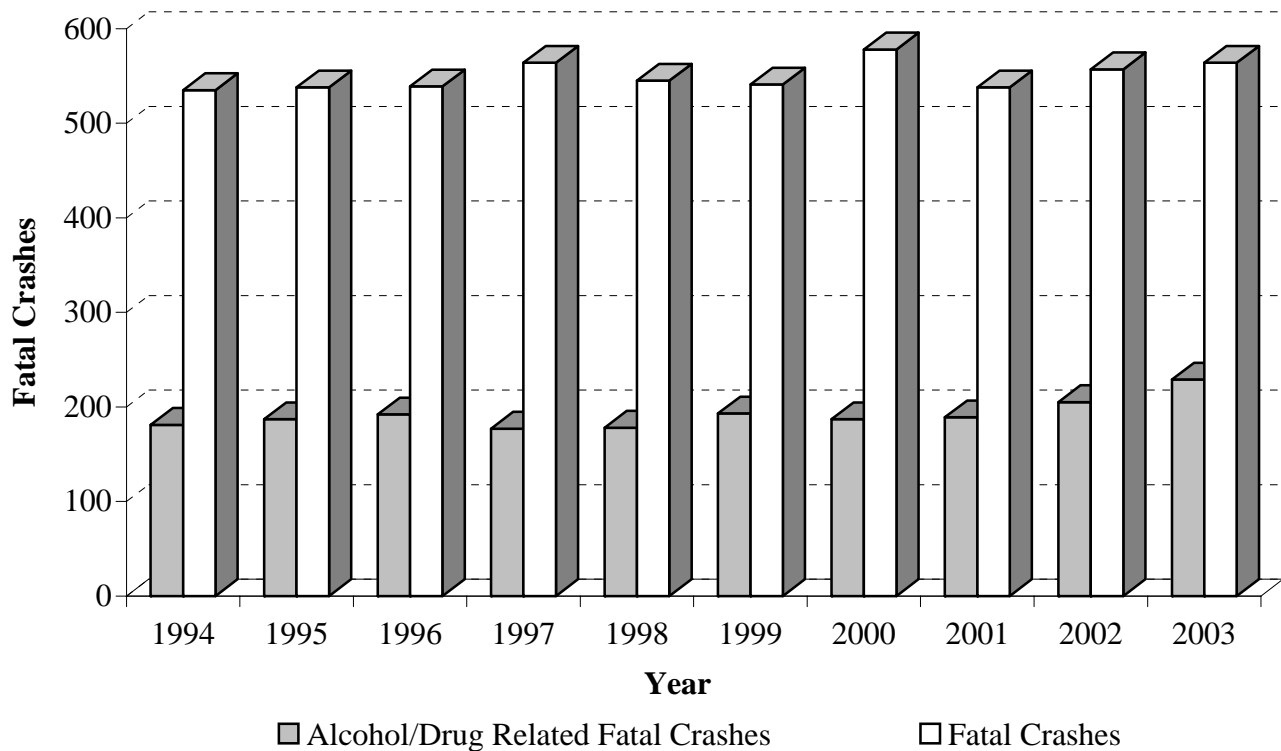
Year	Alcohol/Drug Related Crashes	Total Crashes	Alcohol/Drug as a % of Total Crashes
1994	4,134	70,610	6%
1995	4,054	71,634	6%
1996	3,921	72,177	5%
1997	2,452	71,311	3%
1998	4,125	70,064	6%
1999	4,645	69,912	7%
2000	4,097	70,701	6%
2001	5,912	68,797	9%
2002	4,203	70,904	6%
2003	4,503	70,914	6%



ALCOHOL/DRUG RELATED FATAL CRASHES VS. TOTAL FATAL CRASHES

10 YEAR TRENDS

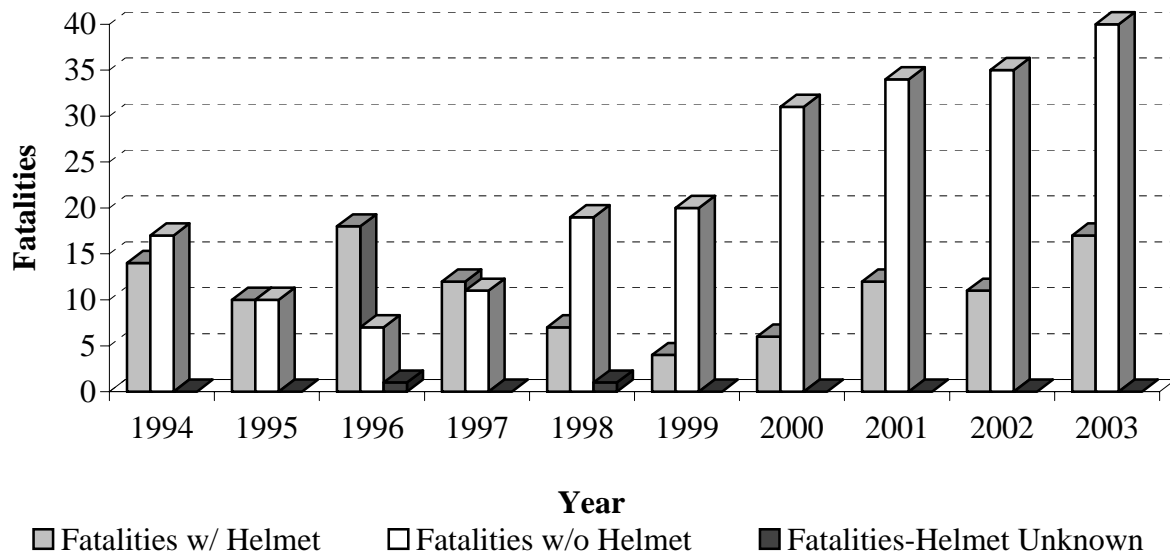
Year	Alcohol/Drug Related Fatal Crashes	Fatal Crashes	Alcohol/Drug Fatal Crashes as a % of Total
1994	181	535	34%
1995	187	538	35%
1996	192	539	36%
1997	177	564	31%
1998	178	545	33%
1999	193	541	36%
2000	187	578	32%
2001	189	538	35%
2002	205	557	37%
2003	229	564	41%



MOTORCYCLE CRASHES

10 YEAR TRENDS

Year	Total Crashes	Non Fatal Injuries	Fatal Crashes	Total Fatalities	Fatalities w/ Helmet	Fatalities w/o Helmet	Fatalities Helmet Use Unknown
1994	495	495	29	31	14	17	0
1995	657	471	20	20	10	10	0
1996	576	369	23	26	18	7	1
1997	571	499	23	23	12	11	0
1998	625	541	26	27	7	19	1
1999	647	588	23	24	4	20	0
2000	871	744	37	37	6	31	0
2001	1,032	919	41	46	12	34	0
2002	1,041	979	46	46	11	35	0
2003	1,117	1002	57	61	17	44	0

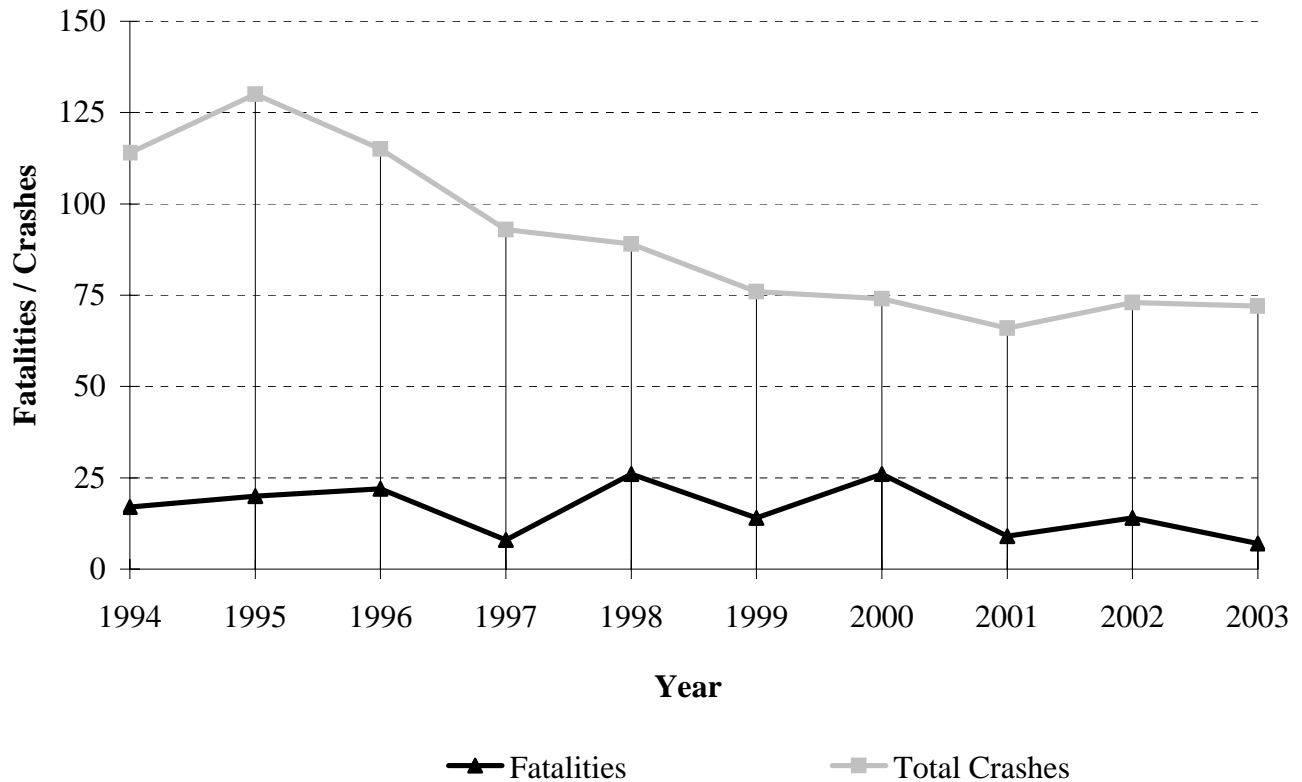


RAILROAD CRASHES, FATALITIES AND INJURIES

10 YEAR TRENDS

Year	Fatal Crashes	Nonfatal Injury Crashes	P.D.O. * Crashes	Total Crashes	Fatalities	Nonfatal Injuries
1994	13	54	47	114	17	78
1995	16	51	63	130	20	80
1996	20	41	54	115	22	52
1997	7	37	49	93	8	48
1998	20	30	39	89	25	49
1999	12	25	39	76	14	40
2000	17	21	36	74	26	36
2001	9	25	32	66	9	36
2002	13	30	30	73	14	42
2003	5	32	35	72	7	41

* Property Damage Only

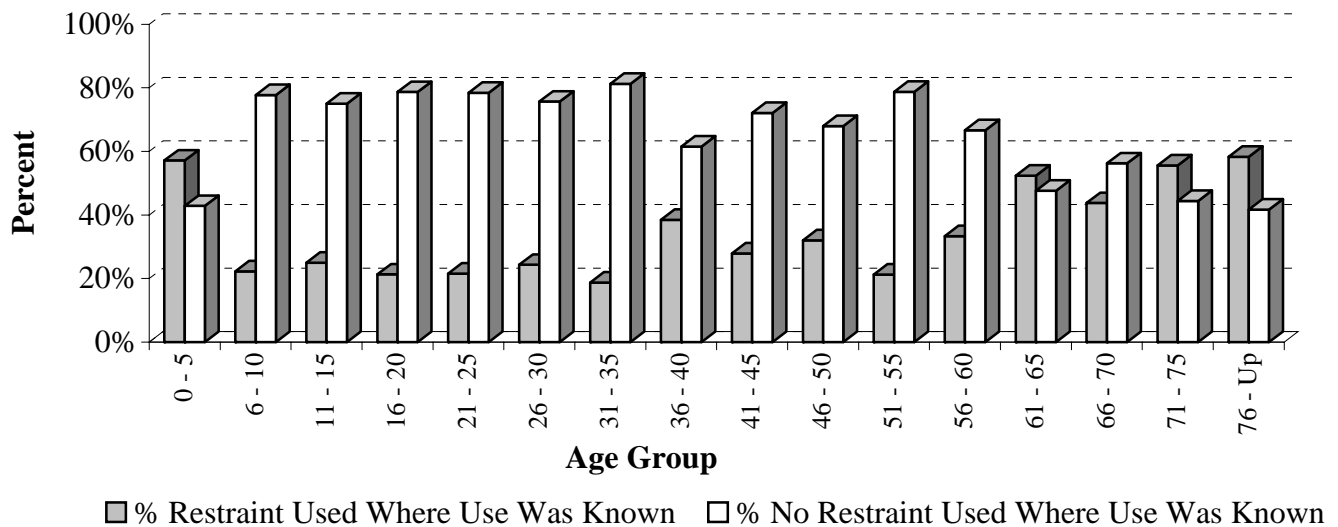


FATALITIES BY SAFETY RESTRAINT USAGE, PERCENT USED AND NOT USED IN 2003

(Non-Motorist and Motorcycle Fatalities not included)

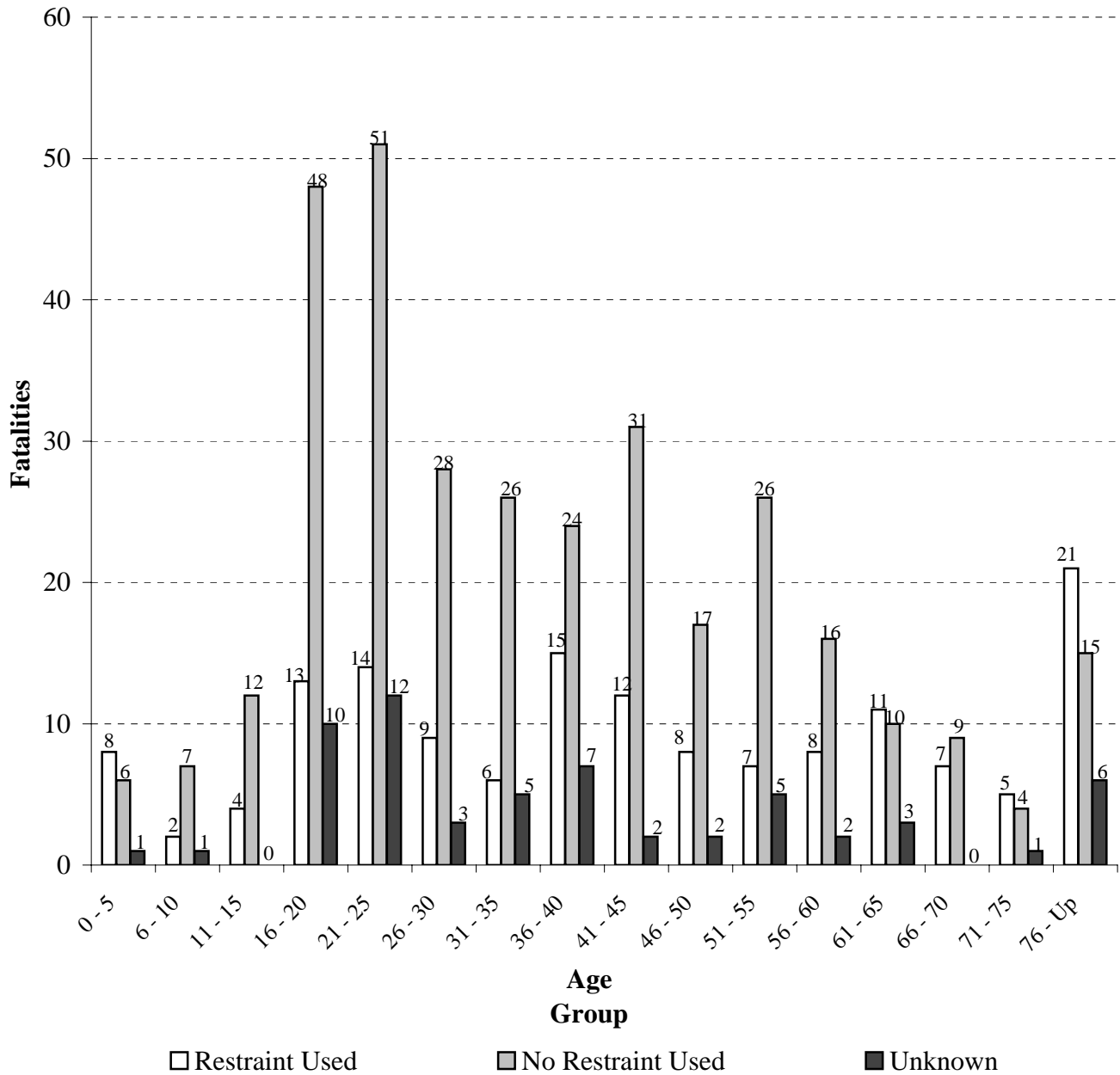
Age Group	Restraint Used	No Restraint Used	Unknown	% Restraint Used *	% No Restraint Used *
0 - 5	8	6	1	57%	43%
6 - 10	2	7	1	22%	78%
11 - 15	4	12	0	25%	75%
16 - 20	13	48	10	21%	79%
21 - 25	14	51	12	22%	78%
26 - 30	9	28	3	24%	76%
31 - 35	6	26	5	19%	81%
36 - 40	15	24	7	38%	62%
41 - 45	12	31	2	28%	72%
46 - 50	8	17	2	32%	68%
51 - 55	7	26	5	21%	79%
56 - 60	8	16	2	33%	67%
61 - 65	11	10	3	52%	48%
66 - 70	7	9	0	44%	56%
71 - 75	5	4	1	56%	44%
76 - Up	21	15	6	58%	42%
Total	150	330	60	31%	69%

* Percentage calculated using only fatalities where restraint use was known.



FATALITIES BY SAFETY RESTRAINT USAGE BY AGE GROUP IN 2003

(Motorcyclists and non-motorists are excluded.)



FATALITIES BY SAFETY RESTRAINT BY AGE IN 2003

(Motorcyclists and non-motorists are excluded.)

Age	None Used	Child Safety Seat	Lap And/Or Shoulder Belt	Unknown		Age	None Used	Child Safety Seat	Lap And/Or Shoulder Belt	Unknown
1	2	5	0			47	1		0	1
2	2	2	0			48	1		3	
3		1	0			49	5		1	1
4	1		0			50	4		1	
5	1		0	1		51	11		1	
6	2		0			52	4		3	1
8	2		0			53	3		0	
9	2		1	1		54	4		0	2
10	1		1			55	4		3	2
11	2		0			56	8		4	
12			1			57	2		1	
13	2		2			58	2		0	
14	2		0			59	4		1	
15	6		1			60			2	2
16	8		0	1		61	4		1	1
17	5		1	4		62	3		1	
18	8		4	2		63			4	1
19	16		3	1		64	2		3	1
20	11		5	2		65	1		2	
21	17		4	1		66	2		0	
22	9		5	2		67	1		0	
23	8		2	6		68	3		3	
24	11		3	2		69	1		3	
25	6		0	1		70	2		1	
26	8		3	1		71			1	
27	3		2			73	1		0	
28	4		1			74	2		2	1
29	6		2			75	1		2	
30	7		1	2		76	1		3	
31	5		3			77	1		3	
32	7		1	2		78	3		1	2
33	6		1	1		79	1		1	2
34	3		0	2		80	1		0	
35	5		1			81	1		1	
36	6		3	1		82	1		0	
37	2		2	2		83	2		1	1
38	5		6			85	1		1	
39	5		2	2		86	1		1	
40	6		2	2		87			3	
41	3		1			88	1		0	
42	8		0	1		89	1		1	
43	4		1			90			2	
44	4		4			91			1	1
45	12		6	1		92			1	
46	6		3			94			1	
						Total	330	8	142	60

FATALITIES BY AGE AND PERSON TYPE IN 2003

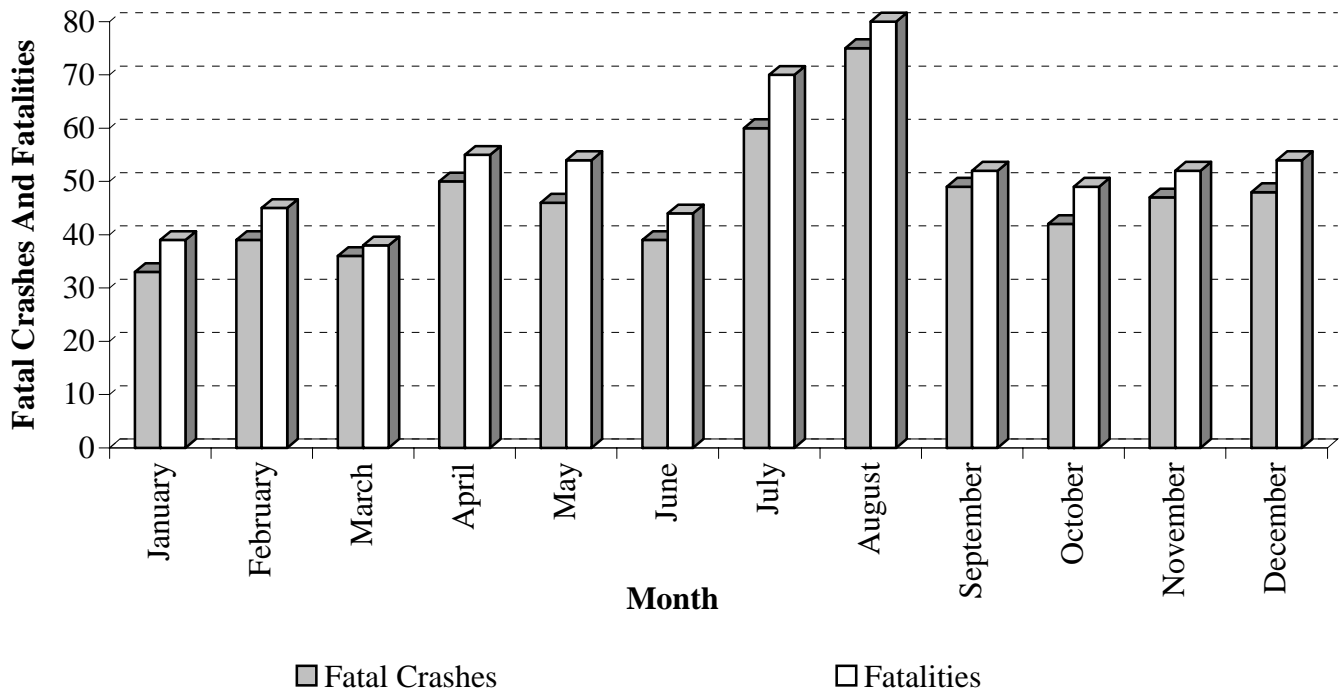
Age	Driver	Occupant	Non-Motorist		Age	Driver	Occupant	Non-Motorist
1		7	1		47	2	1	1
2		4	0		48	7		0
3		1	1		49	7	1	1
4		1	0		50	6	1	1
5		2	0		51	13	1	0
6		2	0		52	7	2	0
8		2	1		53	2	1	0
9		4	0		54	7	2	0
10		2	0		55	7	2	2
11		2	0		56	12	3	0
12		1	1		57	4		1
13	1	3	0		58	3		2
14	1	1	0		59	3	2	0
15	2	5	1		60	5		0
16	6	3	0		61	7		0
17	9	2	0		62	5		1
18	13	3	0		63	3	2	0
19	17	4	0		64	6		0
20	13	6	1		65	2	2	0
21	18	7	0		66	1	1	0
22	12	4	0		67	1		1
23	9	7	1		68	5	1	0
24	11	5	3		69	3	1	1
25	5	2	2		70	4		0
26	13	1	0		71	2		0
27	6		1		73	1		0
28	4	1	0		74	4	1	0
29	7	3	0		75	3		0
30	7	4	0		76	3	1	0
31	7	2	0		77	2	2	1
32	9	2	1		78	4	2	1
33	7	1	0		79	3	1	1
34	6	1	0		80	1		0
35	6	1	1		81	2		0
36	10	2	0		82	1		0
37	6		0		83	2	2	0
38	9	3	2		85	2		0
39	11	1	1		86	1	1	0
40	8	3	0		87	1	2	1
41	8	1	0		88	1		0
42	8	1	0		89	2		0
43	6		2		90	1	1	0
44	8	1	3		91	1	1	0
45	15	5	1		92	1		0
46	9	3	1		94	1		0
					Total	448	153	40

ALCOHOL/DRUG RELATED FATALITIES BY AGE AND PERSON TYPE IN 2003

Age	Driver	Occupant	Non-Motorist		Age	Driver	Occupant	Non-Motorist
1		3			41	4		
5		1			42	7		
8		2	1		43	2		2
9		1			44	3	1	2
10		1			45	9	1	1
11		1			46	4	1	1
14	1				47	1	1	
15	2	2			48	4		
16	1	1			49	5		
17	2				50	2		
18	4	2			51	6		
19	7	3			52	3	1	
20	3	4	1		53		1	
21	9	6			54	2		
22	4	3			55	2	1	1
23	5	3	1		56	4	1	
24	7	4	1		57	2		1
25	3	2	1		58	2		1
26	6				59	1		
27	5		1		61	4		
28	3				62			1
29	3	1			63	2		
30	5	3			64	1		
31	4	2			65	1		
32	2	1	1		68	1	1	
33	5				69		1	1
34	2	1			74	1	1	
35	2		1		76	1		
36	5	1			77		1	
37	2				83	1		
38	5	2			85	2		
39	7	1	1		87		1	
40	5	2			Total	186	66	20

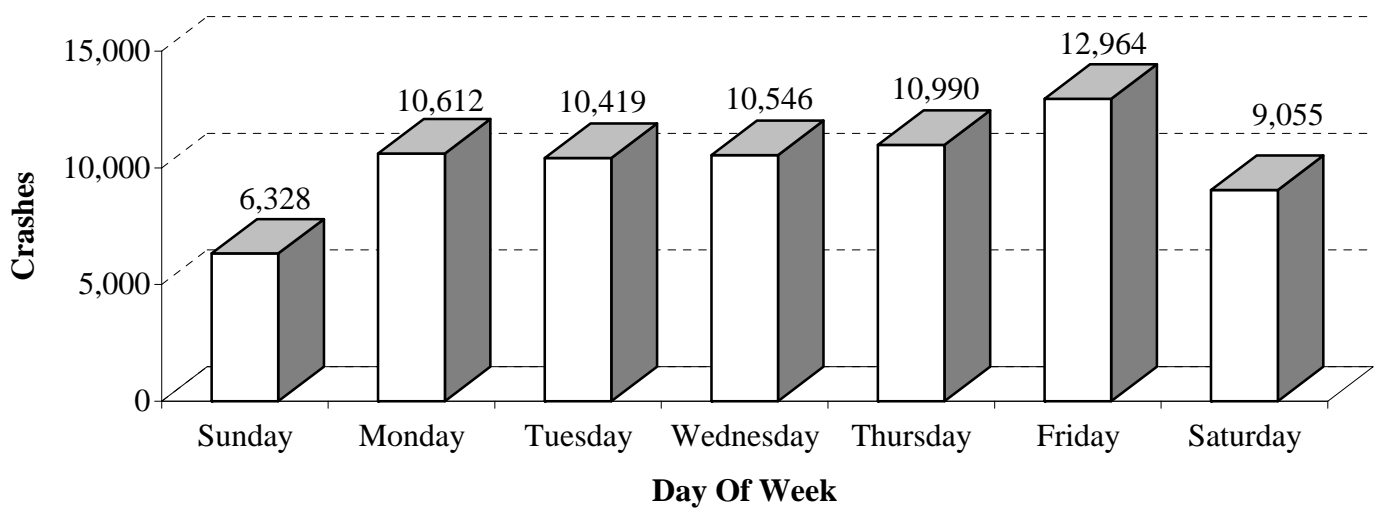
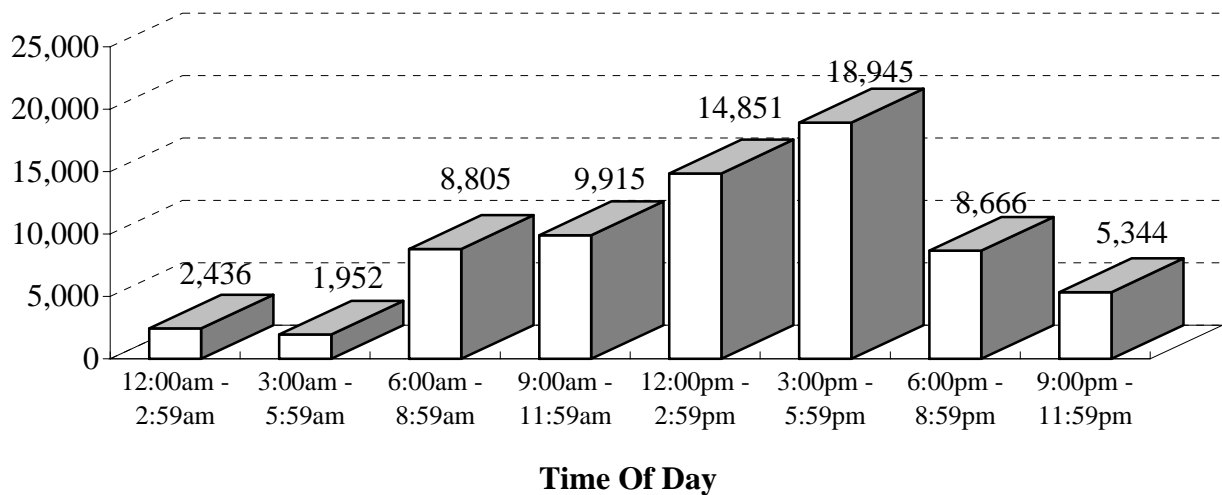
FATAL CRASHES AND FATALITIES BY MONTH IN 2002

Month	Fatal Crashes	Fatalities
January	33	39
February	39	45
March	36	38
April	50	55
May	46	54
June	39	44
July	60	70
August	75	89
September	49	52
October	42	49
November	47	52
December	48	54
Total	564	641



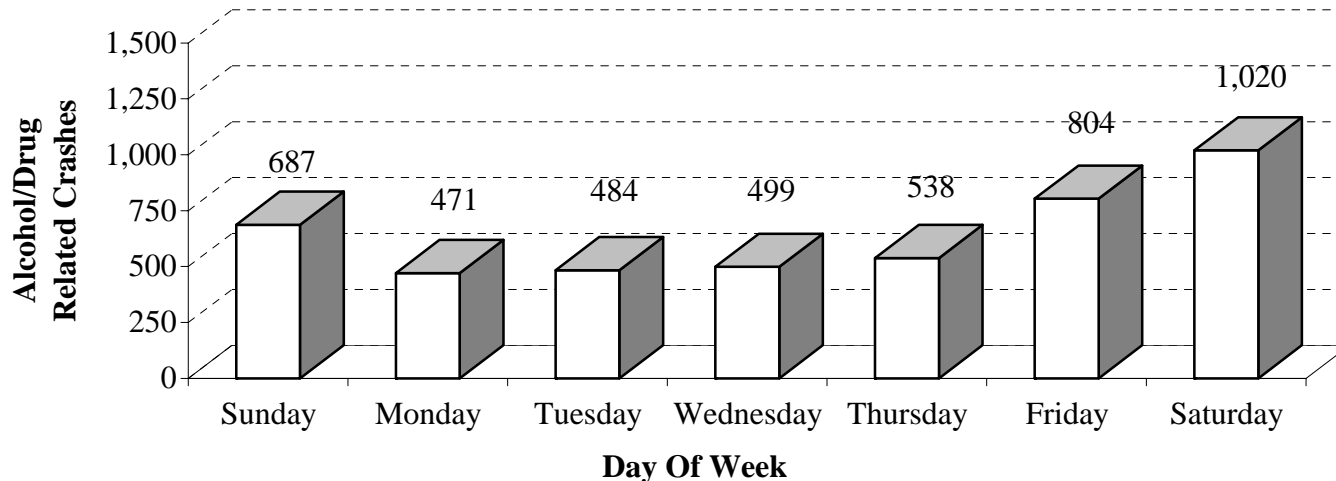
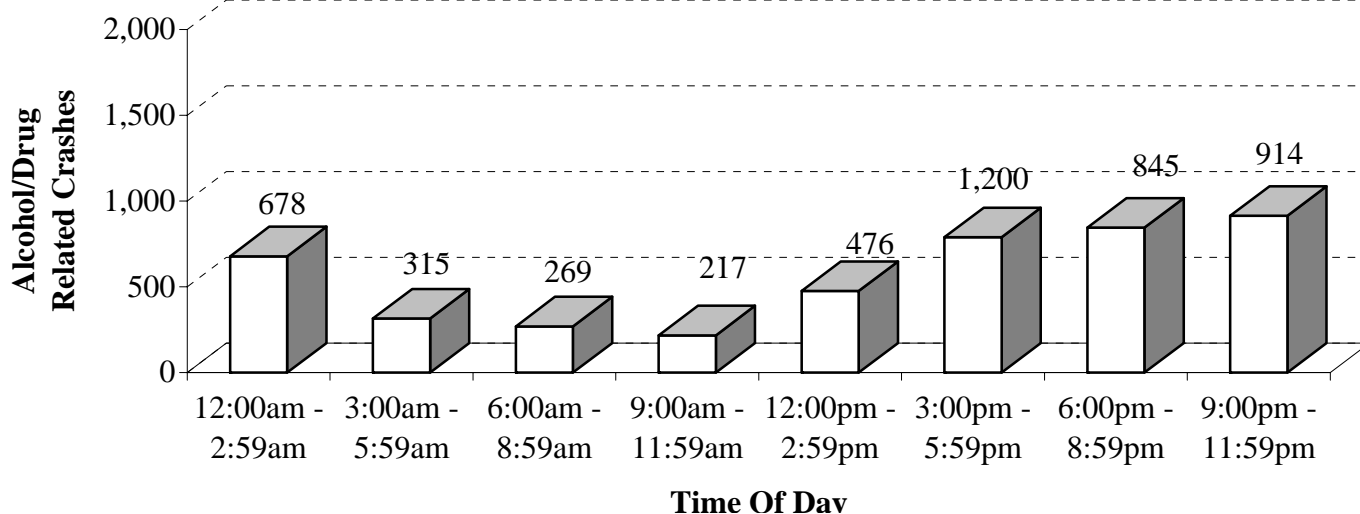
CRASHES BY TIME OF DAY AND DAY OF WEEK IN 2003

Time of Day	Sunday	Monday	Tuesday	Wednesday	Thursday	Friday	Saturday	Total
12:00am - 2:59am	548	246	222	273	291	289	567	2,436
3:00am - 5:59am	343	228	231	237	288	251	374	1,952
6:00am - 8:59am	391	1,498	1,588	1,599	1,722	1,413	594	8,805
9:00am - 11:59am	798	1,460	1,472	1,472	1,531	1,792	1,390	9,915
12:00pm - 2:59pm	1,381	2,233	2,152	2,134	2,264	2,786	1,901	14,851
3:00pm - 5:59pm	1,323	3,133	2,966	2,928	3,103	3,706	1,786	18,945
6:00pm - 8:59pm	985	1,172	1,200	1,271	1,145	1,577	1,316	8,666
9:00pm - 11:59pm	559	642	588	632	646	1,150	1,127	5,344
Total	6,328	10,612	10,419	10,546	10,990	12,964	9,055	70,914



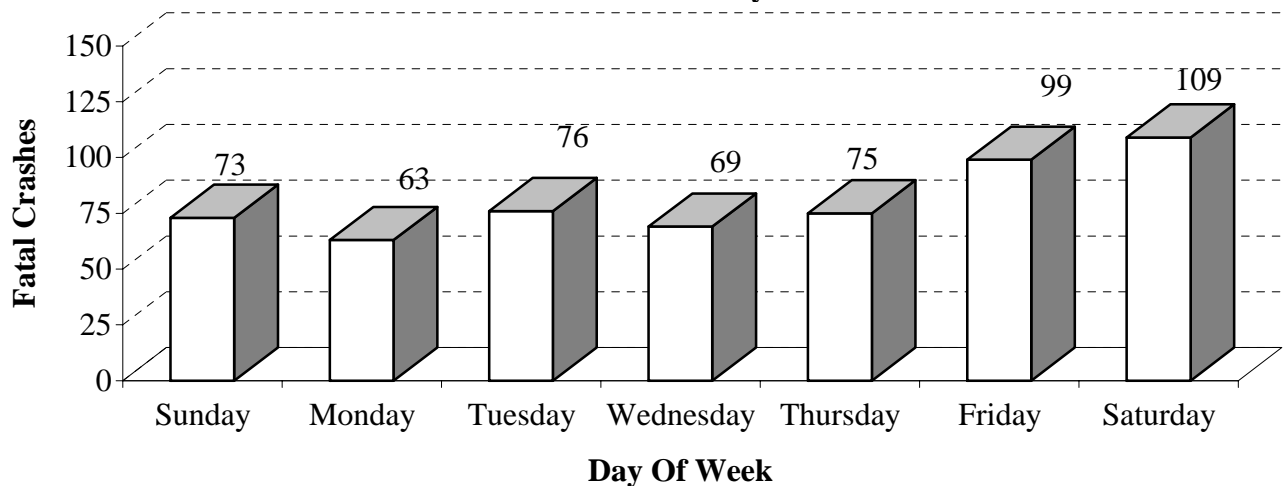
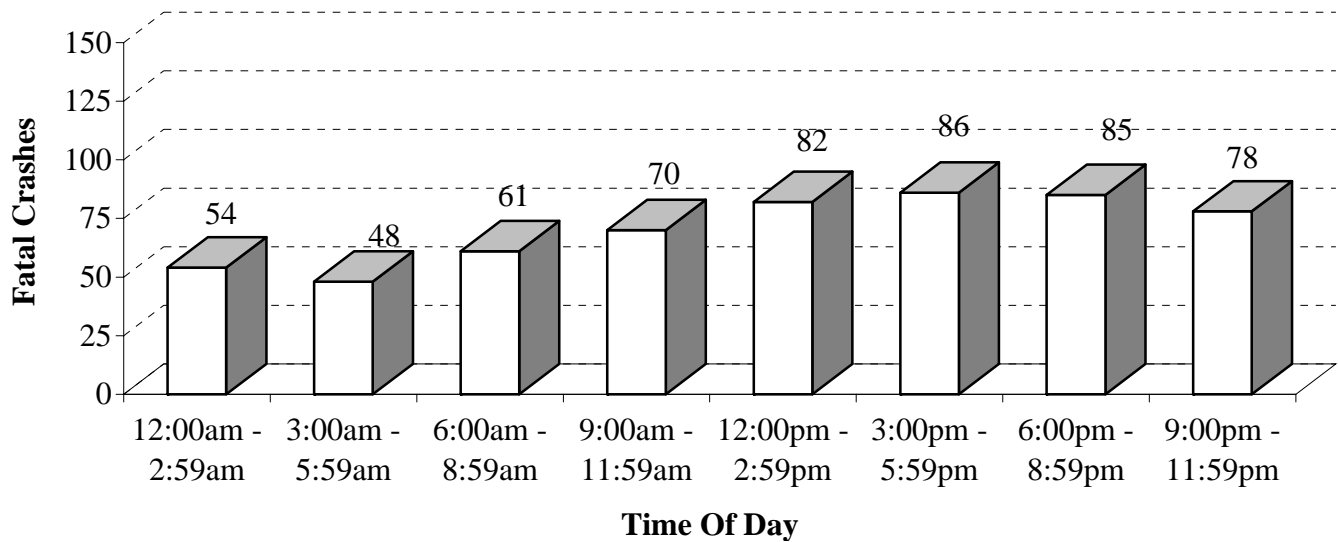
ALCOHOL/DRUG RELATED CRASHES BY TIME OF DAY AND DAY OF WEEK IN 2003

Time of Day	Sunday	Monday	Tuesday	Wednesday	Thursday	Friday	Saturday	Total
12:00am - 2:59am	184	41	50	67	71	75	190	678
3:00am - 5:59am	99	14	14	25	25	44	94	315
6:00am - 8:59am	42	25	38	35	42	42	45	269
9:00am - 11:59am	31	15	40	20	26	37	48	217
12:00pm - 2:59pm	65	63	50	56	67	92	83	476
3:00pm - 5:59pm	91	117	94	91	109	142	145	789
6:00pm - 8:59pm	101	96	109	112	92	156	179	845
9:00pm - 11:59pm	74	100	89	93	106	216	236	914
Total	687	471	484	499	538	804	1,020	4,503



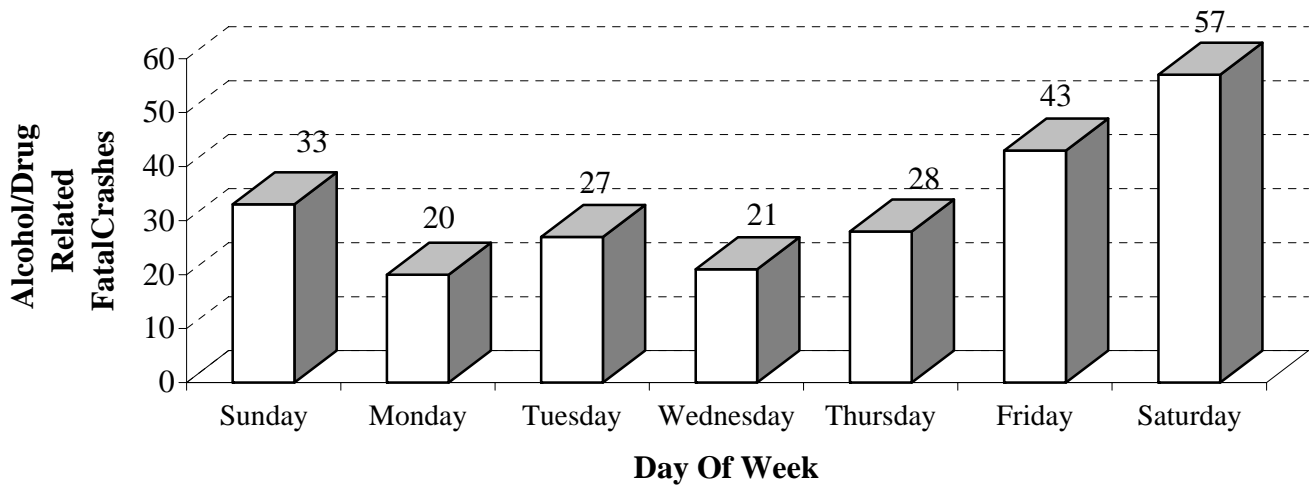
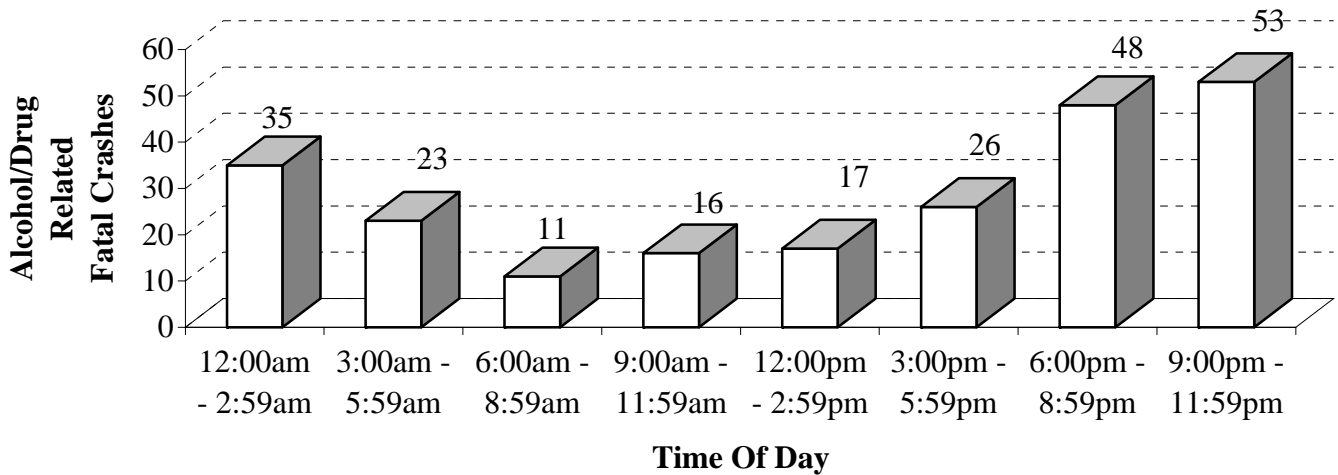
FATAL CRASHES BY TIME OF DAY AND DAY OF WEEK IN 2003

Time of Day	Sunday	Monday	Tuesday	Wednesday	Thursday	Friday	Saturday	Total
12:00am - 2:59am	12	2	3	11	4	4	18	54
3:00am - 5:59am	13	3	3	2	9	6	12	48
6:00am - 8:59am	6	11	7	9	6	12	10	61
9:00am - 11:59am	11	6	14	5	11	15	8	70
12:00pm - 2:59pm	13	10	16	12	12	9	10	82
3:00pm - 5:59pm	8	12	11	13	9	21	12	86
6:00pm - 8:59pm	7	7	13	6	18	14	20	85
9:00pm - 11:59pm	3	12	9	11	6	18	19	78
Total	73	63	76	69	75	99	109	564



ALCOHOL/DRUG RELATED FATAL CRASHES BY TIME OF DAY AND DAY OF WEEK IN 2003

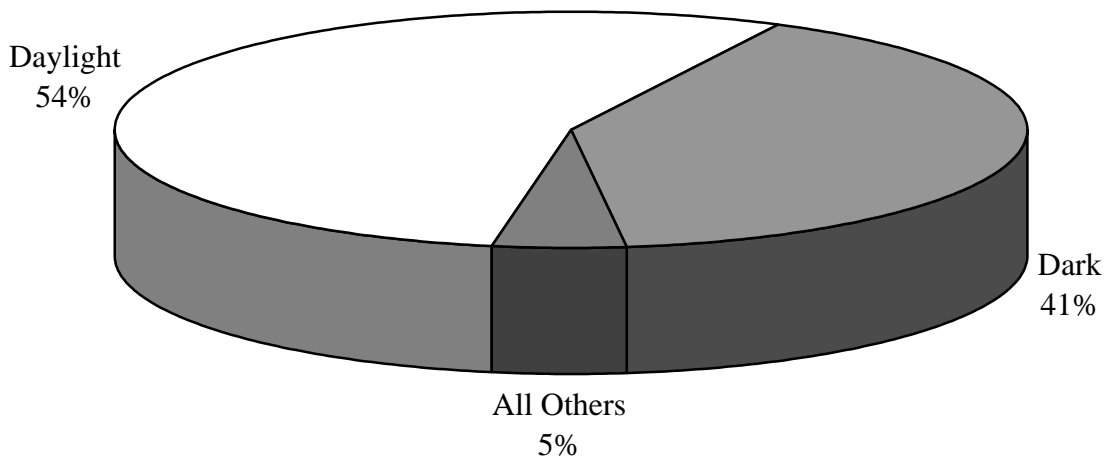
Time of Day	Sunday	Monday	Tuesday	Wednesday	Thursday	Friday	Saturday	Total
12:00am - 2:59am	7	1	3	3	3	3	15	35
3:00am - 5:59am	10	0	0	1	3	3	6	23
6:00am - 8:59am	2	0	1	2	2	2	2	11
9:00am - 11:59am	2	1	4	1	1	4	3	16
12:00pm - 2:59pm	4	2	1	1	4	3	2	17
3:00pm - 5:59pm	4	3	2	5	2	6	4	26
6:00pm - 8:59pm	3	4	9	3	8	8	13	48
9:00pm - 11:59pm	1	9	7	5	5	14	12	53
Total	33	20	27	21	28	43	57	229



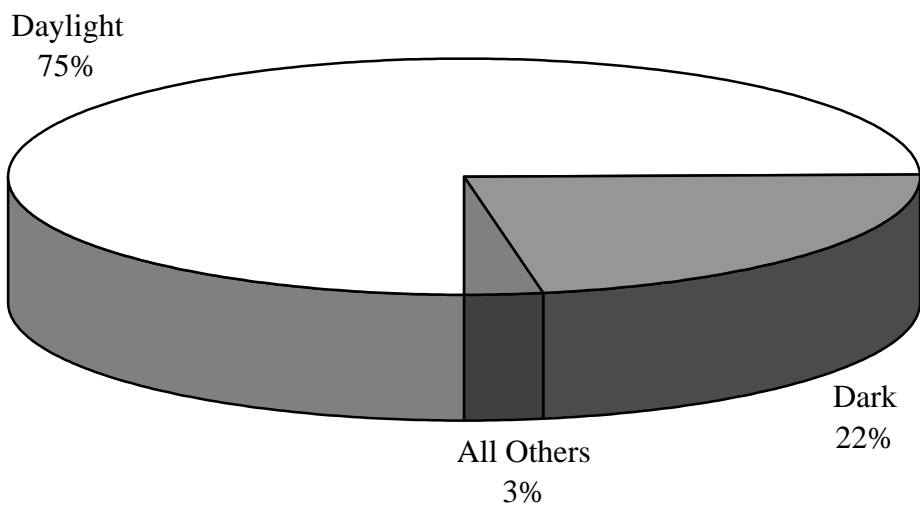
CRASHES BY LIGHTING CONDITIONS IN 2003

Light Condition	Fatal Crashes	Total Crashes
Daylight	309	53,023
Dark	229	15,864
Other	23	1,833
Unknown	3	194
Total	564	70,914

Fatal Crashes



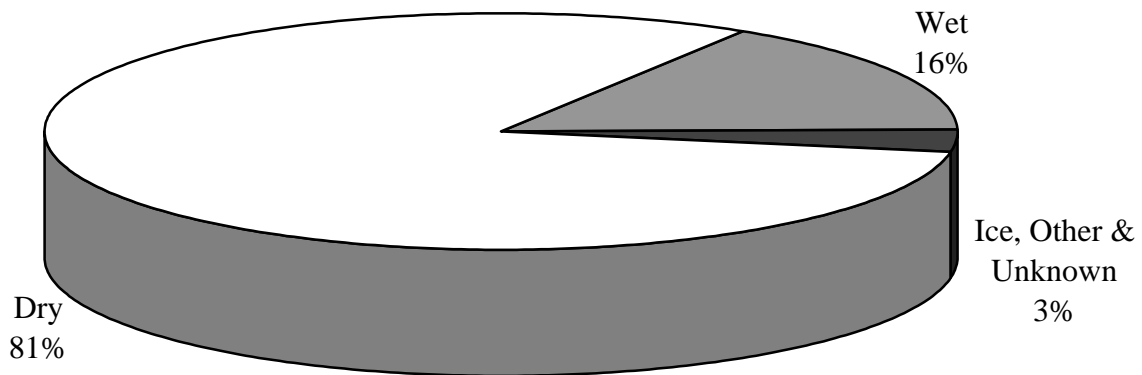
Total Crashes



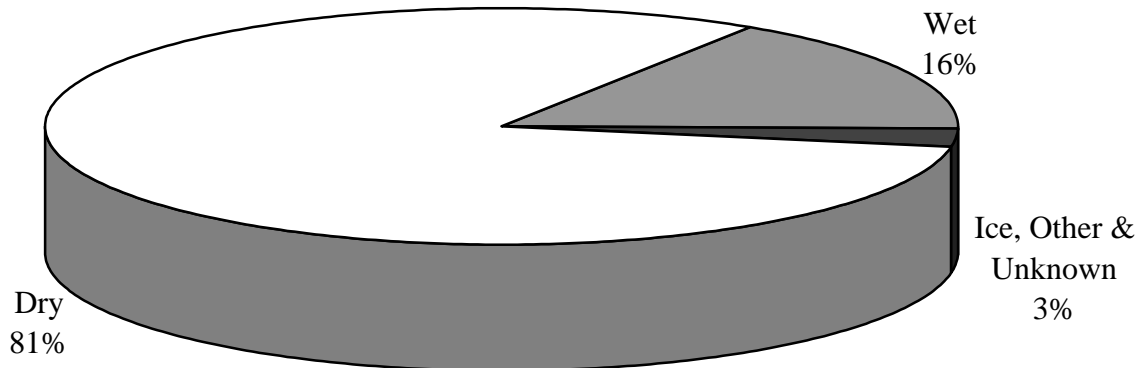
CRASHES BY ROAD SURFACE CONDITIONS IN 2003

Condition	Fatal Crashes	Total Crashes
Dry	457	57,638
Wet	90	11,432
Ice	5	1,329
Other	6	351
Unknown	6	164
Total	564	70,914

Fatal Crashes

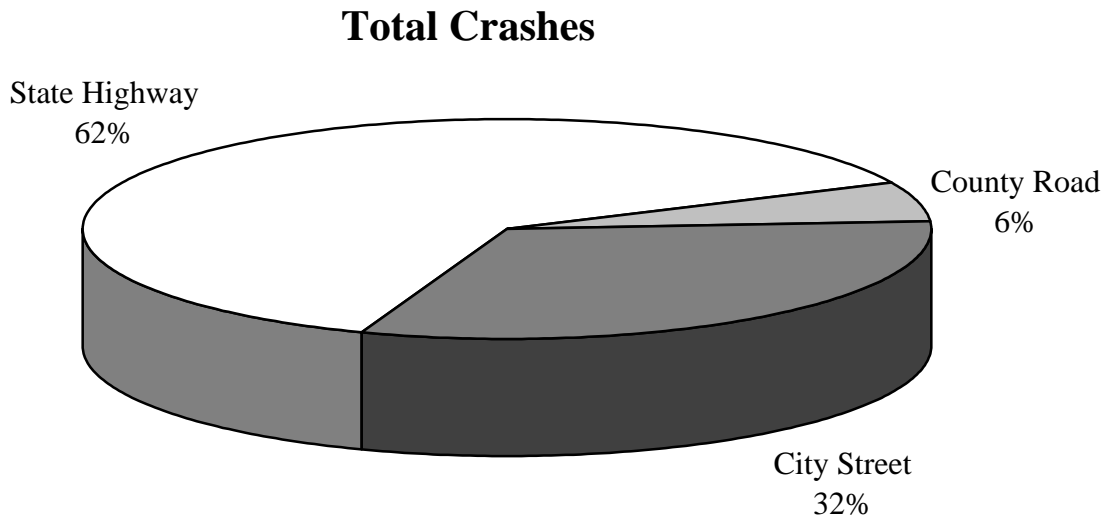
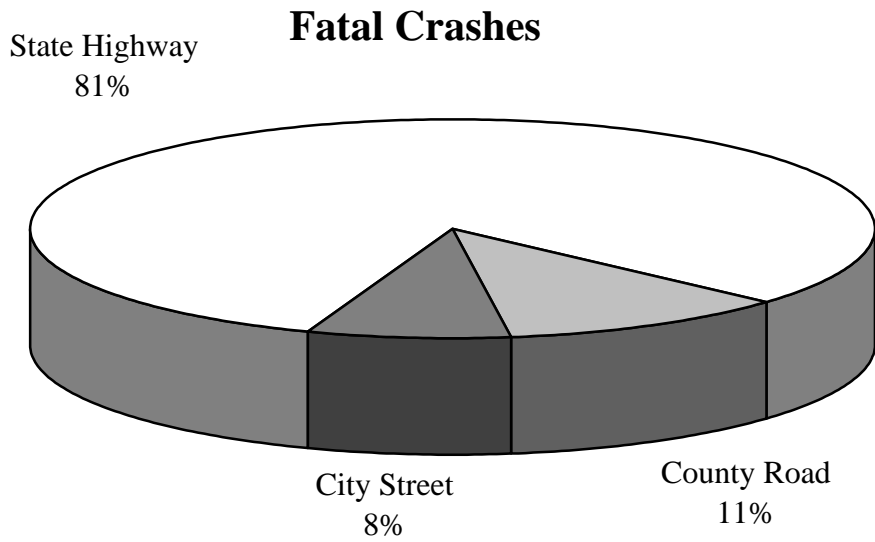


Total Crashes



CRASHES BY ROAD SYSTEM IN 2003

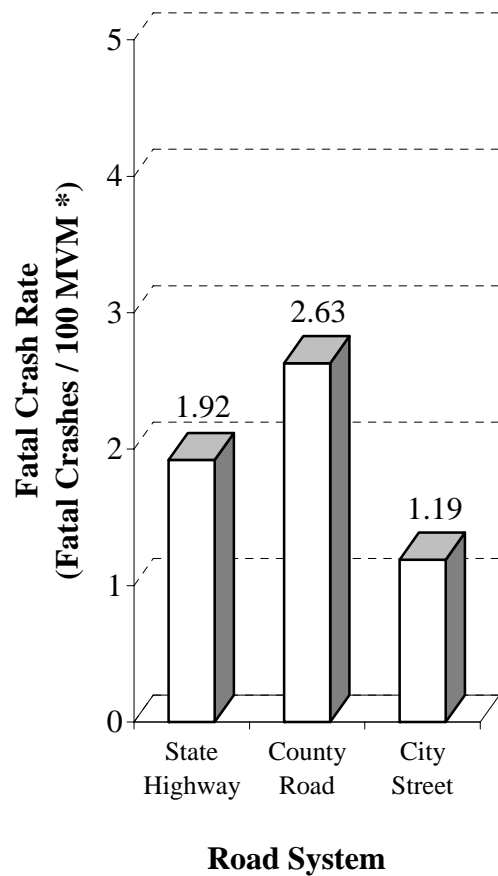
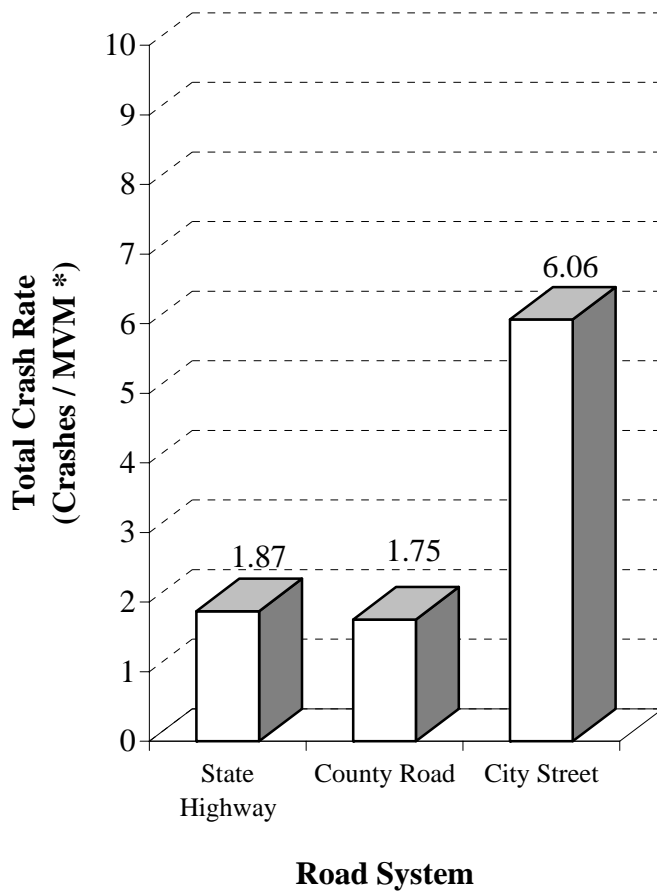
Road System	Fatal Crashes	Nonfatal Injury	P.D.O. * Crashes	Total Crashes
State Highway	457	18,674	25,207	44,338
County Road	63	2,329	1,815	4,207
City Street	44	8,318	14,007	22,369
Totals	564	29,321	41,029	70,914



* Property Damage Only Crashes

CRASH RATES BY ROAD SYSTEM IN 2003

Road System	Annual MVM*	Total Crashes	Crashes per MVM*	Fatal Crashes	Fatal Crashes per 100 MVM*
State Highway	23,743	44,338	1.87	457	1.92
County Road	2,397	4,207	1.75	63	2.63
City Street	3,692	22,369	6.06	44	1.19
Totals	29,832	70,914	2.38	564	1.89

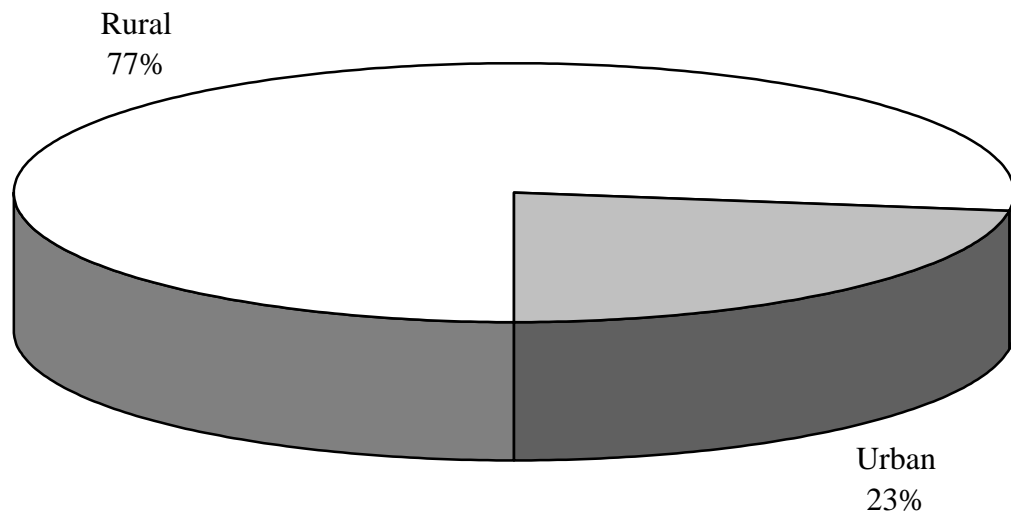


* Million vehicle miles

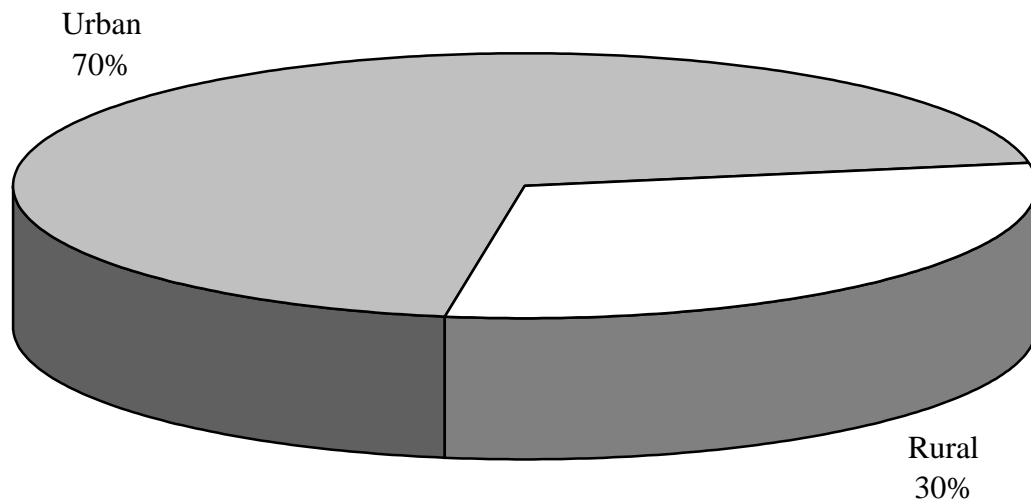
CRASHES BY RURAL/URBAN LOCATION IN 2003

Location	Fatal Crashes	Total Crashes
Rural	436	21,384
Urban	128	49,530
Total	564	70,914

Fatal Crashes

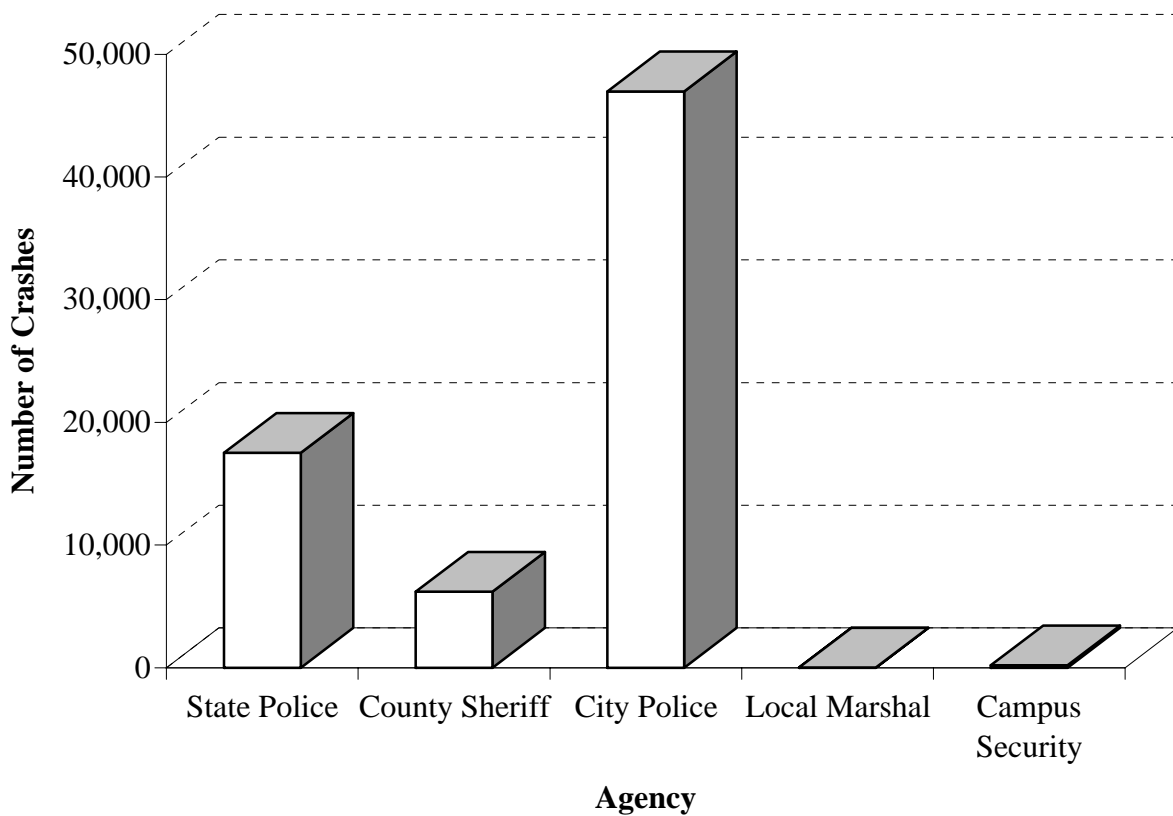


Total Crashes



CRASHES BY INVESTIGATING AGENCY IN 2003

Agency	Total Crashes	% of Total
State Police	17,522	24.71%
County Sheriff	6,206	8.75%
City Police	46,975	66.24%
Local Marshal	4	0.01%
Campus Security	207	0.29%
Total	70,914	100.00%



CRASHES BY TYPE OF COLLISION IN 2003

All Crashes						
Type Of Collision	Fatal Crashes	Fatalities	Injury Crashes	Injuries	P.D.O. * Crashes	Total Crashes
Angle	108	128	9,128	19,478	11,502	20,738
Backing (Rear to Rear)			372	796	1,024	1,396
Head On	73	101	841	2,081	474	1,388
Rear End	22	23	8,211	16,810	12,142	20,375
Sideswipe Opposite Direction	18	22	873	1,950	1,105	1,996
Sideswipe Same Direction	8	8	1,497	3,181	4,493	5,998
Single Vehicle Crash	335	359	8,399	11,648	10,289	19,023
Total	564	641	29,321	55,944	41,029	70,914

Alcohol and Other Drug Related Crashes						
Type Of Collision	Fatal Crashes	Fatalities	Injury Crashes	Injuries	P.D.O. * Crashes	Total Crashes
Angle	31	42	437	1,001	273	741
Backing (Rear to Rear)			8	17	15	23
Head On	32	49	104	301	21	157
Rear End	5	5	364	771	370	739
Sideswipe Opposite Direction	7	10	97	217	65	169
Sideswipe Same Direction	1	1	60	117	122	183
Single Vehicle Crash	153	165	1,463	2,024	875	2,491
Total	229	272	2,533	4,448	1,741	4,503

VEHICLES INVOLVED BY FIRST HARMFUL EVENT IN 2003

Harmful Event	Single Vehicle Crashes			Multi-Vehicle Crashes		
	Fatal Crashes	Injury Crashes	P.D.O. Crashes	Fatal Crashes	Injury Crashes	P.D.O. Crashes
Animal	1	66	1632	0	0	2
Fell From Vehicle	4	31	2	0	1	0
Fire	0	2	5	0	1	0
Immersion	0	9	24	0	0	0
Motor Vehicle in Other Roadway	0	2	2	0	201	148
Motor Vehicle in Transport	0	0	0	487	44,112	63,063
Overturned	75	1404	665	1	0	1
Parked Vehicle	5	398	1734	0	6	8
Pedacycle	0	177	27	2	1	0
Pedestrian	35	421	10	4	16	1
Seizure/Blackout	0	16	2	0	1	0
Train	5	31	33	0	1	2
Bank or Ledge	56	1504	1148	0	3	0
Bridge - Underpass	5	209	237	0	0	0
Fence or Fence Post	6	416	569	2	14	0
Guard Rail or Post	9	330	399	0	3	0
House - Building	1	70	99	0	0	0
Impact Cushion Device	0	24	26	0	0	0
Sign - Traffic Signal	11	298	573	0	1	0
Tree(s)	88	1410	1033	0	3	0
Utility Pole	10	541	563	0	0	0
Other	0	59	67	0	13	5
Other Fixed Object	22	884	1252	0	0	0
Other Non-Fixed Object	1	36	75	0	3	3
Unknown	1	54	107	0	47	50
Total	335	8,392	10,284	496	44,427	63,283

DRIVERS INVOLVED BY OPERATOR FACTOR IN 2003

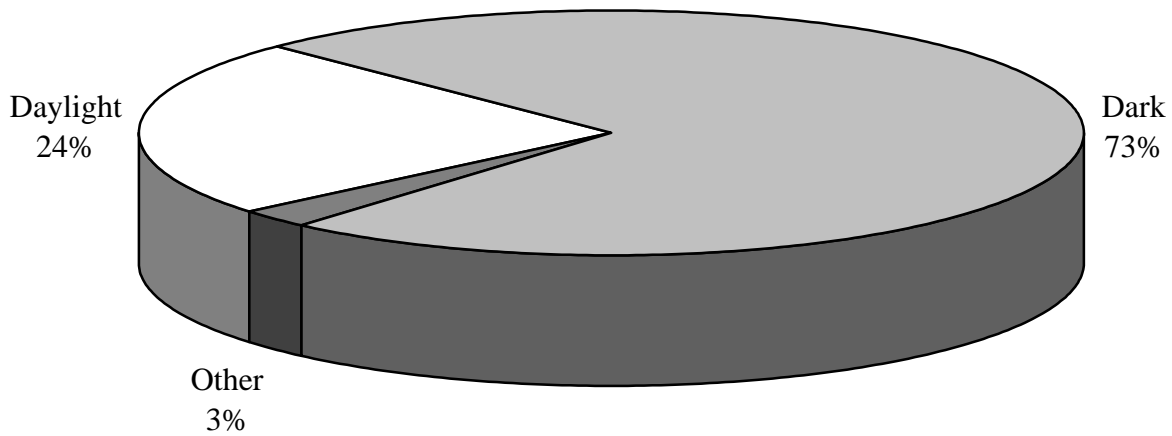
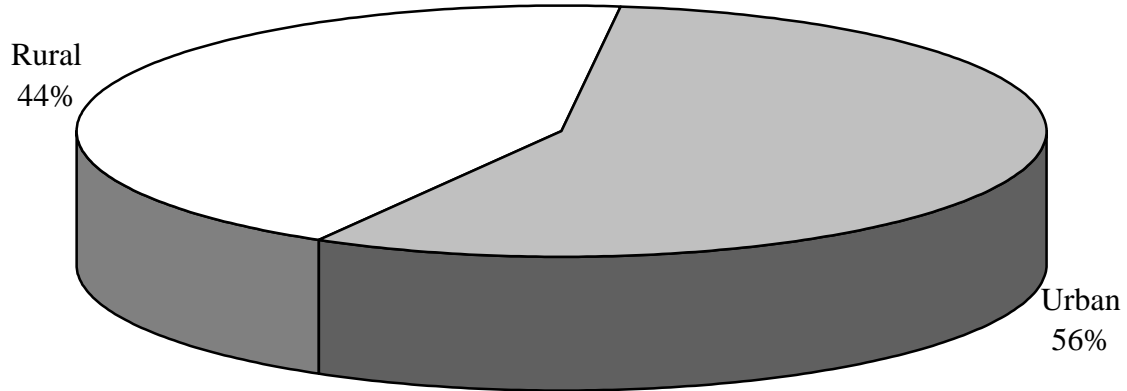
Operator Factor	Crash Severity					Total
	1	2	3	4	5	
None	267	1,455	5,841	15,353	32,089	55,005
Alcohol	29	135	432	282	575	1,453
Careless/Prohibited Driving	143	864	2,404	3,869	9,169	16,449
Crowded Off Roadway		16	68	71	215	370
Cutting In		1	7	52	101	161
Defective Brakes	1	8	51	119	222	401
Defective Lights		3	6	16	33	58
Disregarded Officer/Flagman		4	6	3	10	23
Disregarded Stop Sign	6	38	211	307	456	1,018
Disregarded Traffic Signal	1	27	243	484	776	1,531
Disregarded Yield Sign		1	9	14	13	37
Driving Without Lights	1	2	10	31	37	81
Drugs		16	26	17	53	112
Failure To Dim Headlights			6	10	10	26
Failure To Or Improper Signal	1	5	21	28	48	103
Failure To Yield	56	427	2,006	4,319	8,685	15,493
Following Too Close	7	160	665	3,255	6,260	10,347
Impeding Traffic			14	31	36	81
Improper Backing	1		27	442	1,384	1,854
Improper Lane Change	4	13	63	402	1,535	2,017
Improper Left Turn	4	11	105	279	695	1,094
Improper Passing	6	25	69	165	507	772
Improper Right Turn		8	22	137	401	568
Improperly Parked	1	3	10	22	57	93
Other Defective Equipment	5	24	59	88	286	462
Prohibited U Turn		3	6	17	30	56
Runaway Car/No Driver					1	1
Too Fast For Conditions	83	244	788	1,101	2,234	4,450
Wrong Side of Road	76	116	241	253	447	1,133
Wrong Way/One Way Traffic	5	3	17	25	50	100
Other Defective Equipment	61	201	786	1,303	3,450	5,801
Unknown	71	119	687	1,465	3,725	6,067
Total	562	2,477	9,065	18,607	41,501	72,212

DRIVERS INVOLVED IN ALCOHOL/DRUG RELATED CRASHES BY OPERATOR FACTOR IN 2003

Operator Factor	Crash Severity					Total
	1	2	3	4	5	
None	95	191	452	528	881	2,147
Alcohol	29	135	432	282	575	1,453
Careless/Prohibited Driving	63	165	361	206	483	1,278
Crowded Off Roadway		2	4	3	2	11
Cutting In				1	3	4
Defective Brakes	1	2	3	3	2	11
Defective Lights		1			2	3
Disregarded Officer/Flagman			2	2	1	5
Disregarded Stop Sign	3	10	18	16	22	69
Disregarded Traffic Signal	1	3	14	18	19	55
Disregarded Yield Sign		1	2		2	5
Driving Without Lights		1	2	4	1	8
Drugs		16	26	17	53	112
Failure To Dim Headlights			1		1	2
Failure To Or Improper Signal			3		1	4
Failure To Yield	9	31	79	116	159	394
Following Too Close	1	12	29	77	153	272
Impeding Traffic				1	2	3
Improper Backing			2	4	26	32
Improper Lane Change			1	7	22	30
Improper Left Turn	1		7	9	15	32
Improper Passing	1	2	12	2	20	37
Improper Right Turn		1	1	3	9	14
Improperly Parked		1	2	1	2	6
Other Defective Equipment	1	2	1	2	7	13
Prohibited U Turn					2	2
Too Fast For Conditions	37	38	94	34	64	267
Wrong Side of Road	34	28	39	14	33	148
Wrong Way/One Way Traffic	4		2	3	1	10
Other	17	16	36	36	67	172
Unknown	23	12	44	27	50	156
Total	225	479	1,217	888	1,799	4,608

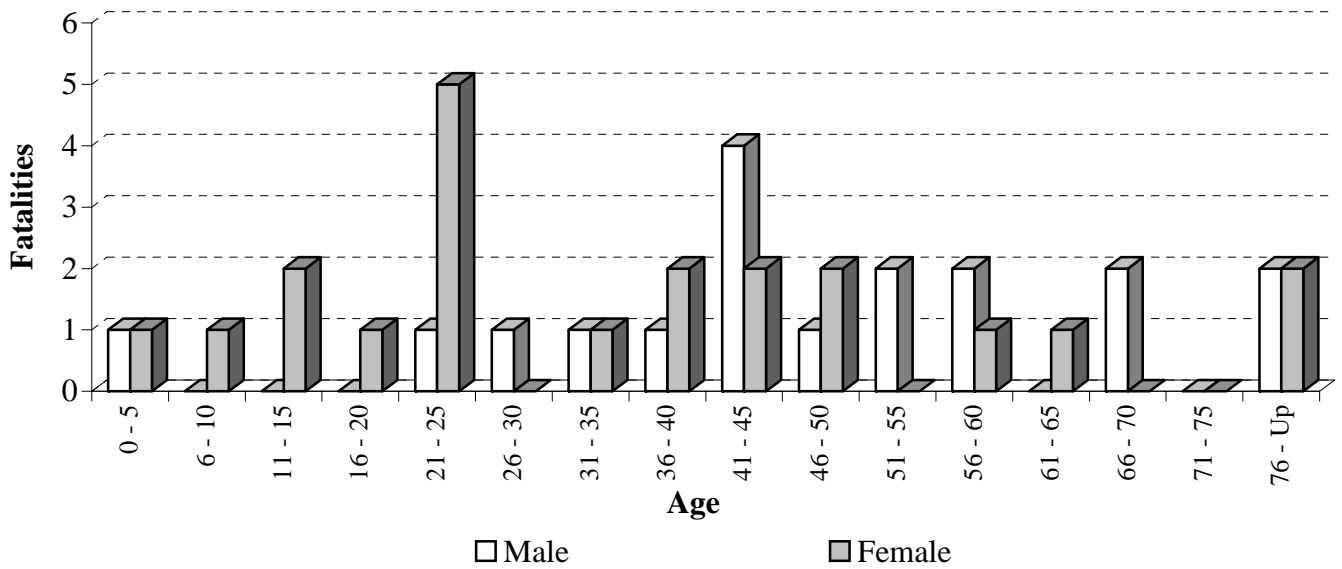
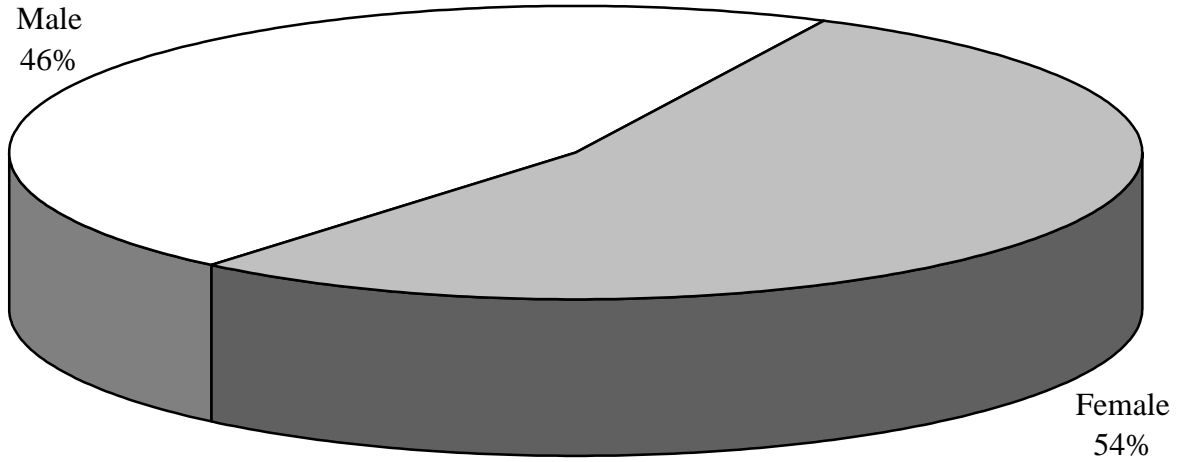
PEDESTRIAN FATALITIES IN 2003

Rural	Urban	Daylight	Dark	Other
17	22	9	28	1



PEDESTRIAN FATALITIES IN 2003 (Cont.)

Male	Female	Total
18	21	39



ARKANSAS' 20 LARGEST CITIES BY POPULATION CRASHES, FATALITIES AND INJURIES IN 2003

City	Fatal Crashes	Fatalities	Injury Crashes	Injuries	P.D.O. * Crashes	Total Crashes
Little Rock	17	17	3,217	5,820	4,977	8,211
Fort Smith	10	10	1,560	2,927	2,570	4,140
North Little Rock	5	5	1,022	1,713	2,551	3,578
Fayetteville	8	8	889	1,514	2,150	3,047
Jonesboro	4	4	880	1,602	1,625	2,509
Pine Bluff	9	10	1,152	2,581	1,092	2,253
Springdale	5	5	528	844	1,713	2,246
Conway	8	10	591	1,201	757	1,356
Rogers	1	1	442	800	657	1,100
Hot Springs	6	6	723	1,114	1,844	2,573
Jacksonville	3	3	410	820	555	968
West Memphis	1	1	368	749	564	933
Texarkana	7	7	310	552	567	884
Russellville	1	1	269	419	826	1,096
Paragould	3	3	513	1,263	463	979
Benton	3	3	298	574	496	797
El Dorado	1	1	384	832	469	854
Sherwood	2	3	228	384	439	669
Bentonville	1	1	375	708	781	1,157
Van Buren	3	3	322	717	402	727

* Property Damage Only

**ARKANSAS' 20 LARGEST CITIES
BY POPULATION
ALCOHOL AND OTHER DRUG RELATED
CRASHES, FATALITIES AND INJURIES IN 2003**

City	Fatal Crashes	Fatalities	Injury Crashes	Injuries	P.D.O. * Crashes	Total Crashes
Little Rock	14	14	187	315	146	347
Fort Smith	5	5	122	217	95	222
North Little Rock	3	3	74	118	82	159
Fayetteville	3	3	94	154	126	223
Jonesboro	2	2	49	83	45	96
Pine Bluff	4	5	74	154	49	127
Springdale	0	0	52	78	100	152
Conway	4	6	39	69	27	70
Rogers	0	0	28	49	20	48
Hot Springs	3	3	46	73	66	115
Jacksonville	1	1	33	51	25	59
West Memphis	0	0	31	50	25	56
Texarkana	2	2	37	61	36	75
Russellville	0	0	16	27	25	41
Paragould	1	1	18	26	15	34
Benton	1	1	25	53	20	46
El Dorado	0	0	20	40	15	35
Sherwood	0	0	14	17	12	26
Bentonville	0	0	15	19	12	27
Van Buren	2	2	21	45	21	44

* Property Damage Only

TOTAL CRASHES, FATALITIES AND INJURIES BY COUNTY IN 2003

County	Fatal Crashes	Fatalities	Injury Crashes	Injuries	P.D.O. Crashes	Total Crashes
ARKANSAS	7	8	322	724	170	499
ASHLEY	2	2	235	417	274	511
BAXTER	8	11	266	510	381	655
BENTON	21	21	1,662	3,246	2,299	3,982
BOONE	7	10	350	684	490	847
BRADLEY	4	4	107	220	47	158
CALHOUN	3	3	43	66	49	95
CARROLL	5	5	283	637	197	485
CHICOT	5	7	39	99	13	57
CLARK	5	5	183	320	321	509
CLAY	6	6	100	207	83	189
CLEBURNE	7	7	218	372	271	496
CLEVELAND	1	1	33	57	40	74
COLUMBIA	8	9	258	556	143	409
CONWAY	6	6	157	305	177	340
CRAIGHEAD	8	8	1,097	1,989	1,833	2,938
CRAWFORD	11	12	669	1,344	801	1,481
CRITTENDEN	11	13	585	1,225	817	1,413
CROSS	3	4	100	210	199	302
DALLAS	1	1	92	211	30	123
DESHA	10	10	127	283	79	216
DREW	4	5	235	468	171	410
FAULKNER	20	25	855	1,643	1,134	2,009
FRANKLIN	4	5	106	184	113	223
FULTON	6	7	62	99	47	115
GARLAND	16	16	1,257	2,073	2,406	3,679
GRANT	5	5	118	236	162	285
GREENE	3	3	565	1,338	507	1,075
HEMPSTEAD	14	17	239	381	440	693
HOT SPRING	5	5	352	754	188	545
HOWARD	4	4	126	257	110	240
INDEPENDENCE	8	9	489	870	650	1,147
IZARD	5	5	43	71	13	61
JACKSON	4	4	79	125	48	131
JEFFERSON	16	19	1,390	2,998	1,439	2,845
JOHNSON	6	6	241	444	344	591
LAFAYETTE	1	2	76	115	43	120
LAWRENCE	3	4	121	277	76	200

TOTAL CRASHES, FATALITIES AND INJURIES BY COUNTY IN 2003 (CONT.)

County	Fatal Crashes	Fatalities	Injury Crashes	Injuries	P.D.O. Crashes	Total Crashes
LEE	5	8	85	195	74	164
LINCOLN	3	4	40	55	41	84
LITTLE RIVER	2	2	78	117	119	199
LOGAN	4	4	167	355	123	294
LONOKE	13	20	487	850	854	1,354
MADISON	9	10	108	227	104	221
MARION	4	7	67	128	66	137
MILLER	17	17	376	684	649	1,042
MISSISSIPPI	12	14	343	679	485	840
MONROE	1	1	25	49	60	86
MONTGOMERY	1	1	104	183	88	193
NEVADA	4	4	58	97	70	132
NEWTON	2	3	52	71	60	114
OUACHITA	9	9	94	155	49	152
PERRY	1	3	40	65	35	76
PHILLIPS	5	5	234	611	149	388
PIKE	3	4	51	88	42	96
POINSETT	10	10	271	499	272	553
POLK	7	9	132	248	131	270
POPE	7	11	506	879	1,088	1,601
PRAIRIE	2	2	57	92	70	129
PULASKI	37	38	5,444	9,662	9,214	14,695
RANDOLPH	4	4	129	314	166	299
SALINE	8	8	706	1,353	1,025	1,739
SCOTT	4	4	110	215	99	213
SEARCY	6	6	46	78	42	94
SEBASTIAN	18	19	1,825	3,429	2,808	4,651
SEVIER	7	7	168	372	141	316
SHARP	4	5	114	217	65	183
ST. FRANCIS	11	19	307	746	280	598
STONE	6	7	41	63	41	88
UNION	15	16	570	1,153	653	1,238
VAN BUREN	7	7	89	190	102	198
WASHINGTON	27	28	2,043	3,568	4,288	6,358
WHITE	19	23	892	1,879	696	1,607
WOODRUFF	2	2	15	34	9	26
YELL	5	6	167	329	166	338
TOTALS	564	641	29,321	55,944	41,029	70,914

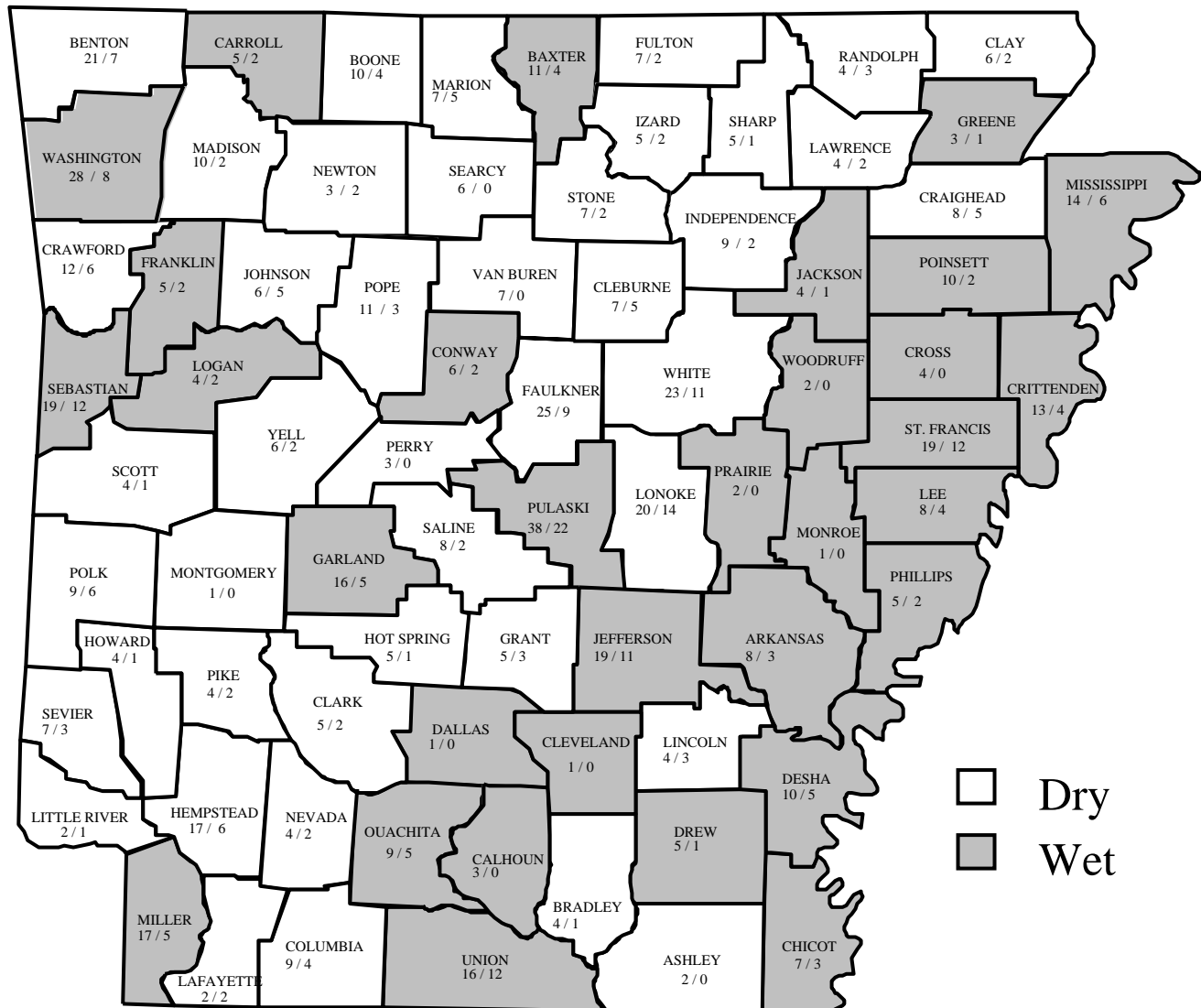
ALCOHOL/DRUG RELATED CRASHES, FATALITIES AND INJURIES BY COUNTY IN 2003

County	Fatal Crashes	Fatalities	Injury Crashes	Injuries	P.D.O. Crashes	Total Crashes
ARKANSAS	3	3	18	32	7	28
ASHLEY	0	0	20	39	17	37
BAXTER	4	4	53	93	18	75
BENTON	7	7	135	221	82	224
BOONE	2	4	34	61	25	61
BRADLEY	1	1	11	17	0	12
CALHOUN	0	0	3	5	1	4
CARROLL	2	2	32	58	13	47
CHICOT	2	3	6	10	0	8
CLARK	2	2	12	14	5	19
CLAY	2	2	15	28	14	31
CLEBURNE	5	5	26	43	14	45
CLEVELAND	0	0	6	12	4	10
COLUMBIA	4	4	13	24	5	22
CONWAY	2	2	20	30	11	33
CRAIGHEAD	5	5	70	118	51	126
CRAWFORD	6	6	56	102	42	104
CRITTENDEN	3	4	45	84	48	96
CROSS	0	0	7	11	6	13
DALLAS	0	0	9	22	2	11
DESHA	5	5	12	25	3	20
DREW	1	1	23	43	10	34
FAULKNER	6	9	69	115	44	119
FRANKLIN	2	2	13	15	2	17
FULTON	2	2	10	17	8	20
GARLAND	5	5	129	196	121	255
GRANT	3	3	16	30	3	22
GREENE	1	1	27	39	19	47
HEMPSTEAD	4	6	23	42	20	47
HOT SPRING	1	1	31	60	5	37
HOWARD	1	1	5	6	6	12
INDEPENDENCE	1	2	45	88	19	65
IZARD	2	2	5	8	1	8
JACKSON	1	1	13	20	5	19
JEFFERSON	8	11	102	193	64	174
JOHNSON	5	5	17	33	10	32
LAFAYETTE	1	2	12	19	2	15
LAWRENCE	2	2	11	23	5	18

ALCOHOL/DRUG RELATED CRASHES, FATALITIES AND INJURIES BY COUNTY IN 2003 (CONT.)

County	Fatal Crashes	Fatalities	Injury Crashes	Injuries	P.D.O. Crashes	Total Crashes
LEE	1	4	6	19	2	9
LINCOLN	2	3	6	10	2	10
LITTLE RIVER	1	1	10	14	8	19
LOGAN	2	2	22	37	9	33
LONOKE	8	14	56	102	35	99
MADISON	2	2	11	22	6	19
MARION	2	5	8	14	2	12
MILLER	5	5	38	64	38	81
MISSISSIPPI	5	6	30	62	22	57
MONROE	0	0	4	6	4	8
MONTGOMERY	0	0	12	26	5	17
NEVADA	2	2	12	17	2	16
NEWTON	1	2	5	11	3	9
OUACHITA	5	5	17	31	0	22
PERRY	0	0	6	9	3	9
PHILLIPS	2	2	22	64	3	27
PIKE	2	2	7	9	2	11
POINSETT	2	2	19	34	13	34
POLK	4	6	13	21	6	23
POPE	2	3	45	71	41	88
PRAIRIE	0	0	5	6	1	6
PULASKI	22	22	363	583	308	693
RANDOLPH	3	3	16	39	8	27
SALINE	2	2	78	135	56	136
SCOTT	1	1	15	23	7	23
SEARCY	0	0	14	27	1	15
SEBASTIAN	11	12	149	276	106	266
SEVIER	3	3	19	36	11	33
SHARP	1	1	7	12	6	14
ST. FRANCIS	6	12	27	66	11	44
STONE	2	2	6	8	3	11
UNION	11	12	37	84	25	73
VAN BUREN	0	0	12	19	4	16
WASHINGTON	7	8	202	323	246	455
WHITE	9	11	55	128	24	88
WOODRUFF	0	0	4	10	2	6
YELL	2	2	21	34	4	27
Totals	229	272	2,533	4,448	1,741	4,503

TOTAL FATALITIES VS. ALCOHOL/DRUG RELATED FATALITIES IN 2003 BY COUNTY



Dry
 Wet

County	Number of Counties	Total Fatalities	Alcohol/Drug Related Fatalities	% Alcohol/Drug Related
Wet	32	313	136	43%
Dry	43	328	136	41%